



310 Sandy Bay Road SANDY BAY, TAS



A PRIZED LOCATION AND STUNNING RESIDENCE

Set among private spacious grounds this unique character property not only enjoys a premier Sandy Bay address, but an endless list of qualities and features that will delight the most fastidious of purchasers.

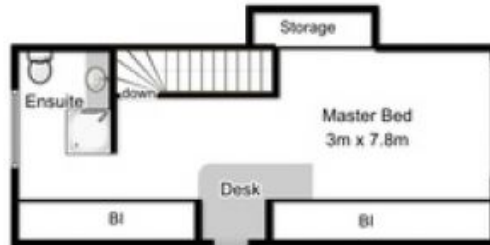
Impeccable presentation is evident from the moment you arrive, the lush manicured gardens and established hedging ensuring your optimal privacy all year round.

Key features to the residence include:

Custom cabinetry in both bathrooms.
Versatile floorplan to suit many family configurations and a key focus on open plan living

Mel Shutt
Property Consultant

0428428884



Fixtures and fittings are for display only, not to scale.
This floor plan is a sketch for illustration only.
All measurements are internal and approximate.
Produced by open2view.com for Ripple Realty

House Floor Area approx: 265sqm