




14 Cazaly Drive CHIGWELL, TAS 
 4  2

## CHIC MODERN ABODE WITH FANTASTIC VIEWS

Are you looking for a near new home, panoramic views in a new homes area? Well look no further.

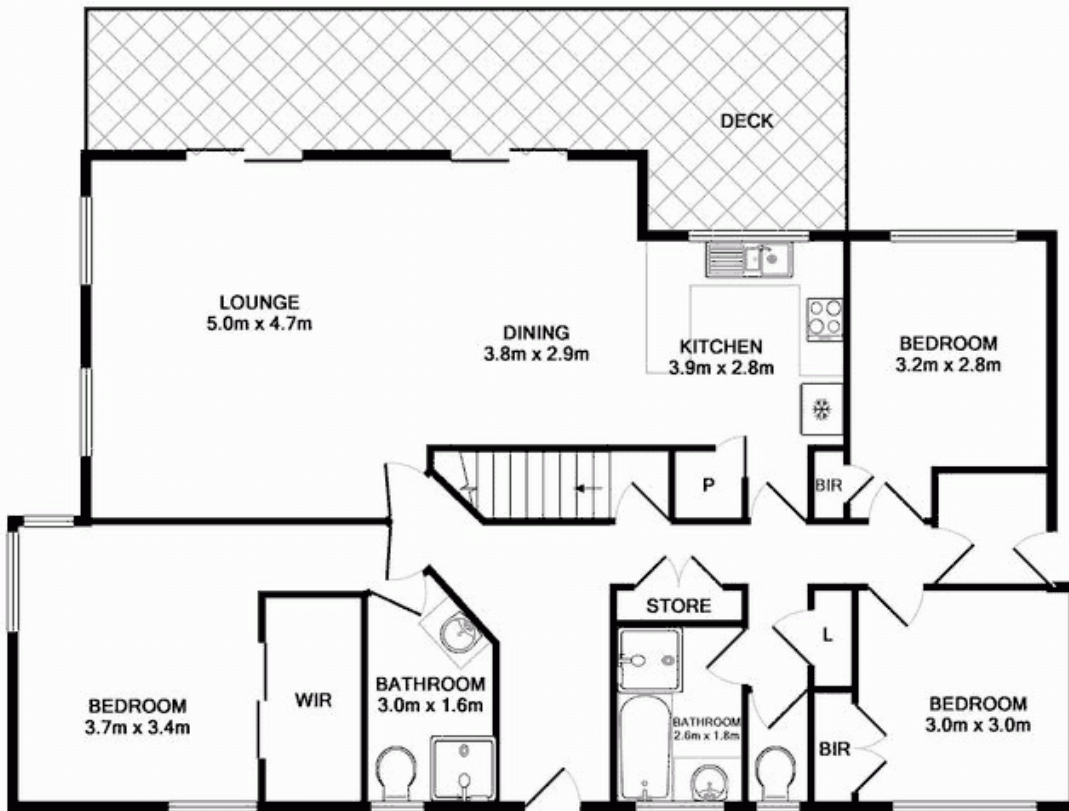
Located in quiet no-through street, this home is complete with fabulous views towards Otago, Cadbury and the Bowen Bridge, with Gunners Quoin and Mount Direction in the background. This vista is enjoyed from the deck which stretches across the front of the home and from the open plan living area.

Elevated and overlooking other homes, this quiet locale makes you feel like you are a world away.

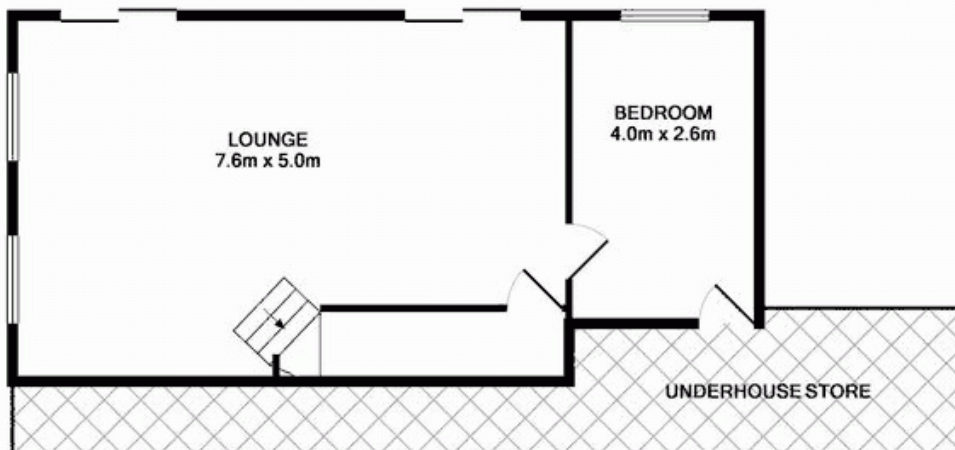
The open plan living room incorporating the dining, lounge and kitchen has sliding doors onto the spacious timber deck. This room experiences all day sun as the sun moves from eas

**Mel Shutt**  
Property Consultant

0428428884



GROUND FLOOR  
APPROX. FLOOR  
AREA 116.1 SQ.M.  
(1249 SQ.FT.)



BASEMENT LEVEL  
APPROX. FLOOR  
AREA 48.9 SQ.M.  
(527 SQ.FT.)  
TOTAL APPROX. FLOOR AREA 165.0 SQ.M. (1776 SQ.FT.)

Fixtures & Fittings are for display purposes only, not to scale  
Produced by Open2view.com