



247 Tinderbox Road TINDERBOX, TAS



SOLD

From its elevated position this home enjoys picturesque sweeping water views of Cape Raoul, the Iron Pot, South Arm and the northern tip of Bruny Island.

This home positioned on approximately 2.839 hectares is a peaceful and idyllic location and is so close to the water that you can hear the sea birds calling and the waves lapping at the shore.

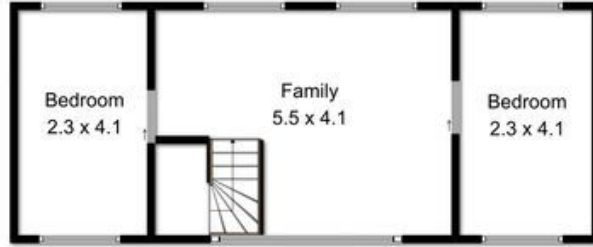
The home is accessed via a concrete circular driveway and offers a flexible floor plan and an abundance of space depending on your family requirements.

The main entrance is into the lounge area. This room is warmed by an open fire and has lovely views. Adjacent to this room by the front door is the study with access from the lounge.

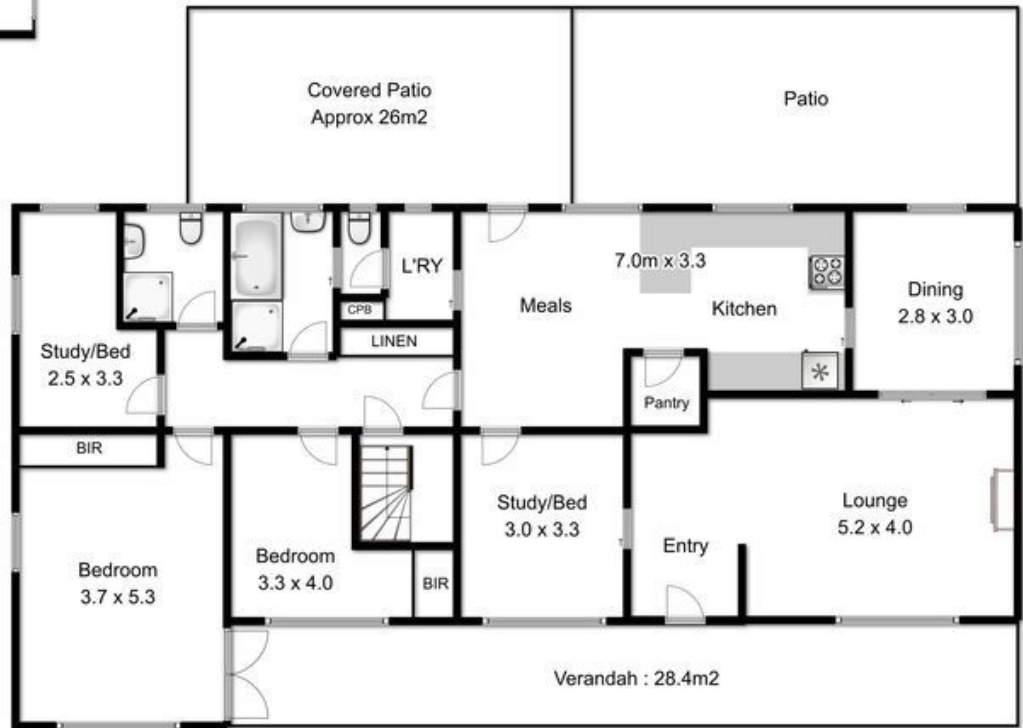
Mel Shutt

Property Consultant

0428428884



Total Upper Floor Area : 47m²



Total Ground Floor Area : 180m²

Fixtures & Fittings are for display only, not to scale.
Produced by open2view.com