



22/482 Sandy Bay Road SANDY BAY, TAS



2



1



1

## SOLD

This much admired apartment complex offers the ultimate in city living, set on the banks of the Derwent River and situated next to a beautifully maintained grassed and landscaped park. You will constantly enjoy the sound of the sea lapping against the shore, what a heavenly place to call home.

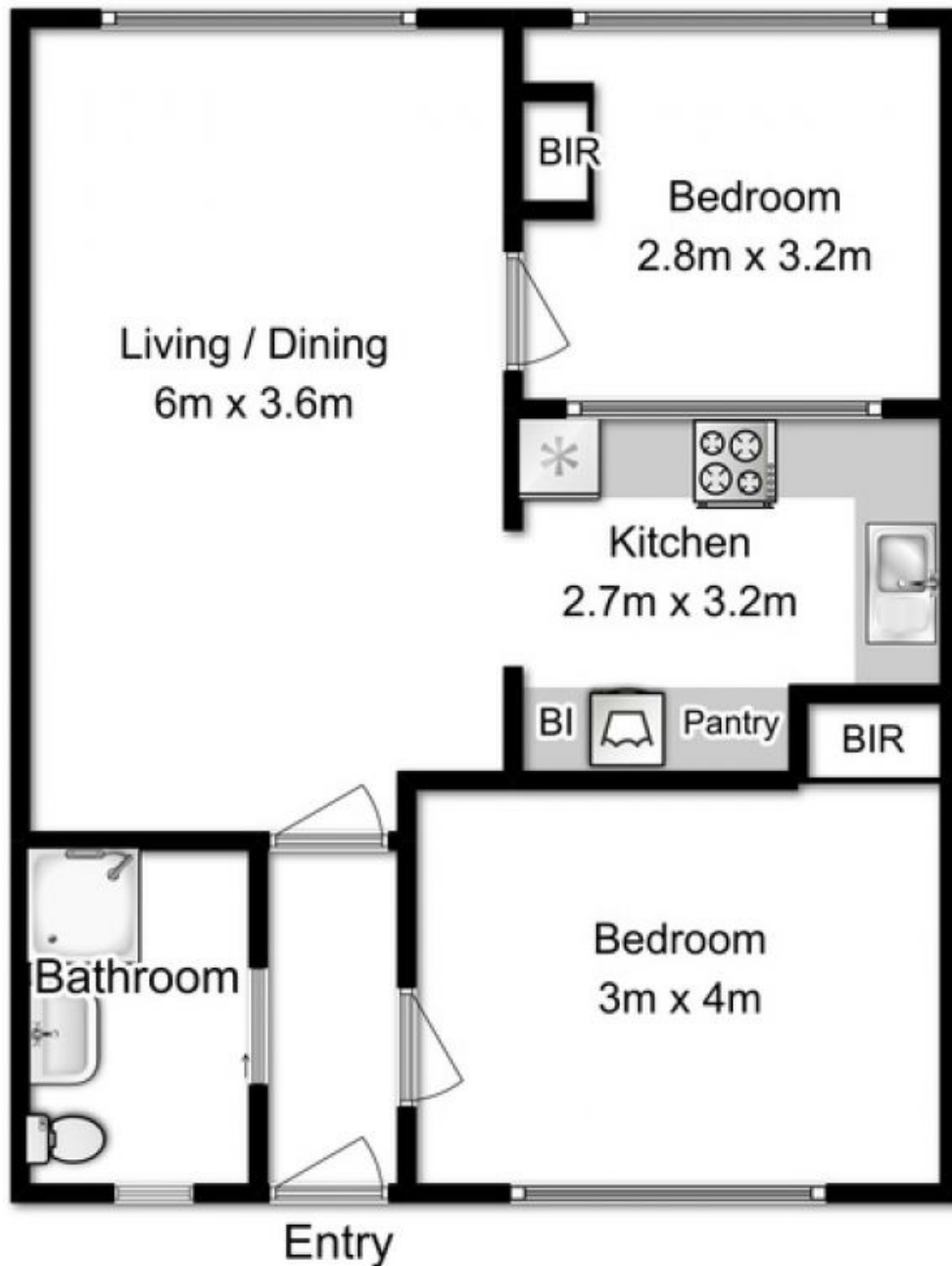
Level street access is certainly advantageous, as is the single carport space with storage box and for those who prefer to walk or utilise transport for work, you are a comfortable walk to Sandy Bay Shopping precinct with Hobart CBD only another 10 minutes away. Regular bus transport is right at your front door too!

A stylish central kitchen benefits from a highlight window to maximise natural light and features bright cabinetry, quality appliances including ceramic hot plate, dishwasher, elec

**Mel Shutt**

Property Consultant

0428428884



Floor Area approx: 64sqm



Floor plan is a sketch for illustration purposes only.  
All measurements are internal and approximate.  
Fixtures and fittings are for display only.  
Not to scale.  
Produced by open2view.com for Ripple Realty