



20 Homer Avenue MOONAH, TAS



SOLD

With such a convenient lifestyle being in great proximity to local shopping, schools, transport and major services, it is understandable why Moonah is hot on the radar for purchasers. The market is very strong in this area, particularly where properties offer the opportunity to simply move in and unpack.

This lovely 1950s home will definitely tick many boxes for purchasers, its outstanding condition and character features of immediate appeal.

Key features to this fabulous offering include:

- Spacious 602m2 block with established grounds

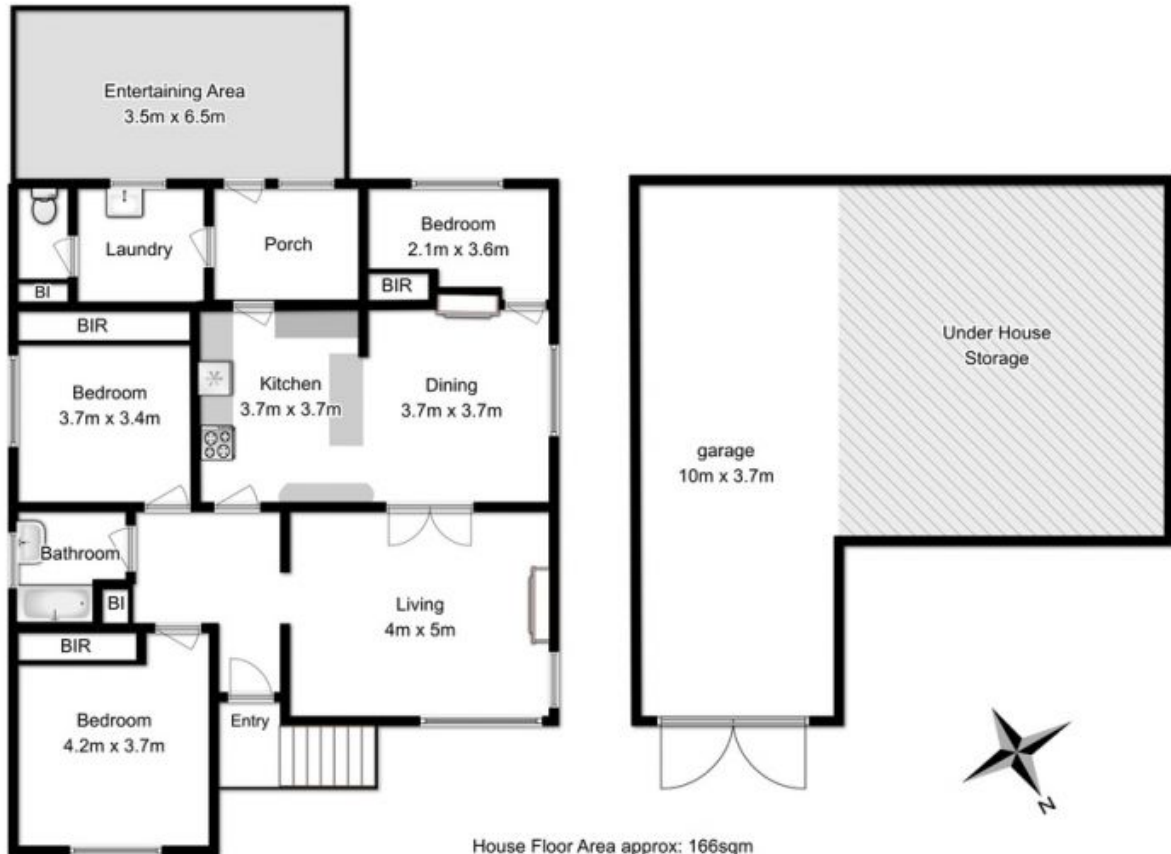
- Leafy private rear yard with outdoor entertainment space overlooking the grounds, so ideal for those with young children

- Quality blinds and carpets

Mel Shutt

Property Consultant

0428428884



House Floor Area approx: 166sqm
(including garage)

Fixtures and fittings are for display only, not to scale.
This floor plan is a sketch for illustration only.
All measurements are internal and approximate.
Produced by open2view.com for Ripple Realty