



40 Anfield Street GLENORCHY, TAS



## A GREAT FAMILY HOME THAT WILL BE HARD TO BEAT!

There is so much space with this low maintenance and immaculately maintained home. Not only does it offer a dead level large 920m<sup>2</sup> block, spacious main residence with 4 bedrooms, 2 bathrooms and 2 living areas but also an abundance of secure vehicle accommodation, off street parking and workshop space - not a bad place to start!

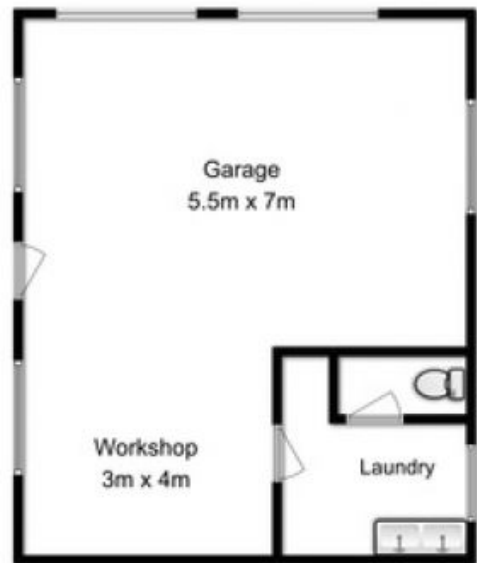
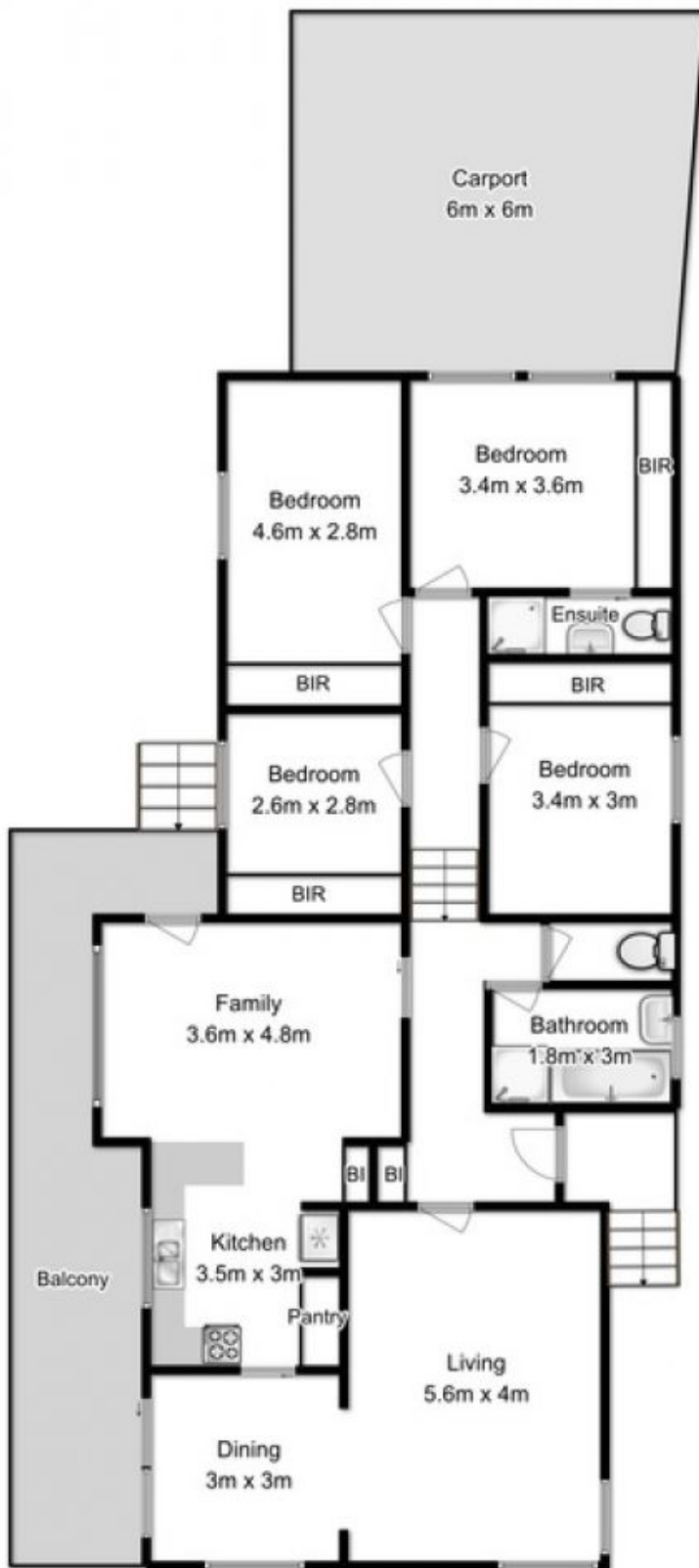
Built in 1970 the home has been lovingly maintained throughout its life presenting in as new condition throughout. The home itself is positioned very well on the block to retain privacy whilst not compromising on the capacity for generous parking and outdoor living space.

Living space is generous with both a formal living room and open plan family space catering well for relaxation and entertaining - the open plan family/kitchen has direct access to

**Mel Shutt**

Property Consultant

0428428884



House Floor Area approx: 207sqm

This floorplan is a sketch for illustration only  
Not to scale  
All measurements are internal and approximate  
Produced by open2view.com for Ripple Realty

