



11541 Tasman Highway LITTLE SWANPORT, TAS



4



2



3

## FREYCINET VIEWS AT MAYFIELD

Looking for that home that allows you to get away from it all in a peaceful location, to sit and ponder or just to unwind from the hectic lifestyle that takes control of our lives?

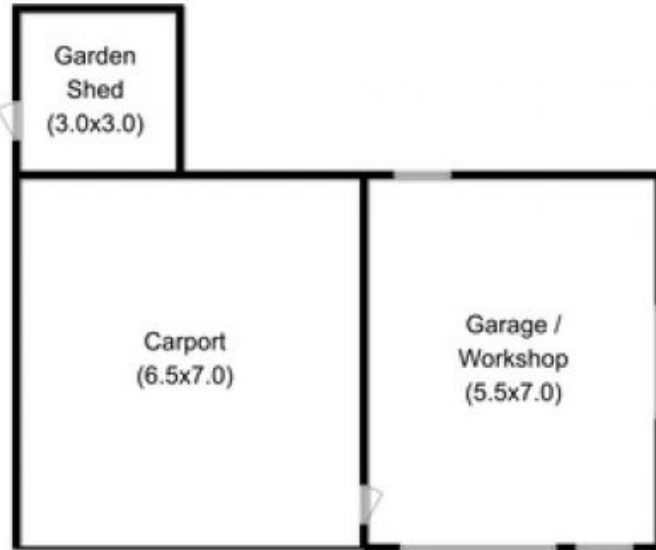
Then check out this stunning rural property offering views, serenity and space!

Carved from the surrounding historic sheep farming property, this small patch of paradise sits on 2.7ha (approx.) of flat lush pasture land with panoramic countryside and coastal views towards Great Oyster Bay, nearby lagoon and entrancing Freycinet Peninsula.

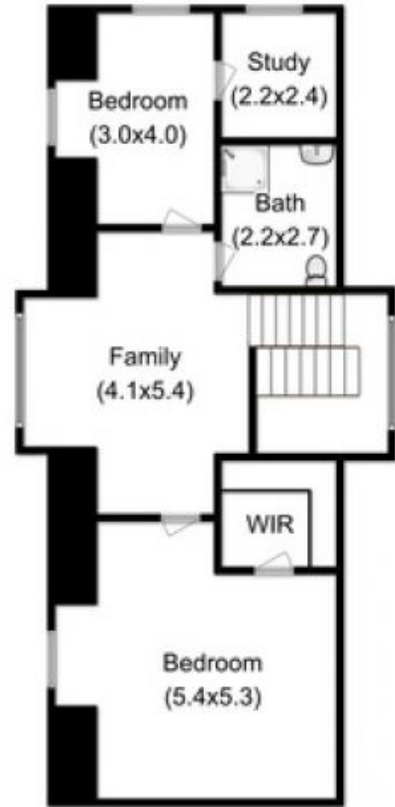
This large home, being approx. 25 squares, features a wonderful timber kitchen with wall oven, hotplates, rangehood and dishwasher and fridge, dining/family space, formal dining and large separate lounge with bay window. 2 double bedrooms, full bathroom, powder room, la

**Ollie Wuttke**

0414 851 192



Ground Floor



First Floor



Total Approx. Floor Area : 227 sqm  
 Total Approx. Outbuilding Area : 93 sqm



All measurements are internal and approximate.  
 This plan is a sketch for illustration, not valuation.  
 Produced by Open2view.com