



58 Elinga Street HOWRAH, TAS



## BRILLIANTLY RENOVATED FAMILY HOME WITH OUTSTANDING VIEWS!

When this home was originally constructed in 1966 you can see the architect wanted to ensure that the expansive views of the Derwent River, harbour and mountain were able to be fully appreciated as floor to ceiling windows stretch the full length of this fantastic home.

From the kitchen there is a sitting area which opens up via French doors to a private paved under cover area for alfresco dining in the summer months and looks into the rear garden which is ideal for kids and the family pet.

In the second level of the home you will find a large master bedroom with walk in robes and beautifully appointed ensuite with both areas enjoying river views and fourth bedroom wi

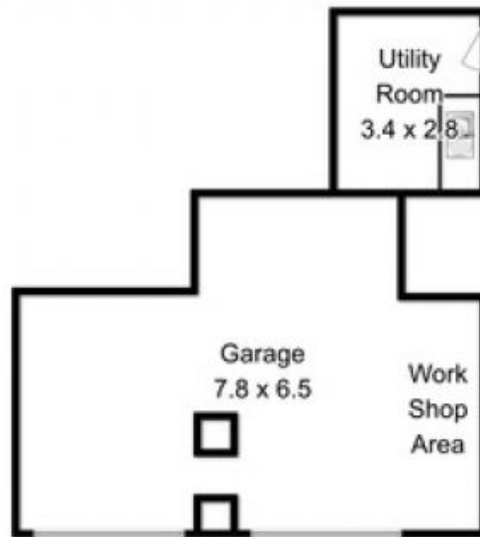
**Council Rates:** \$2,080.00/year (approx)

**Water Rates:** \$936.00/year (approx)

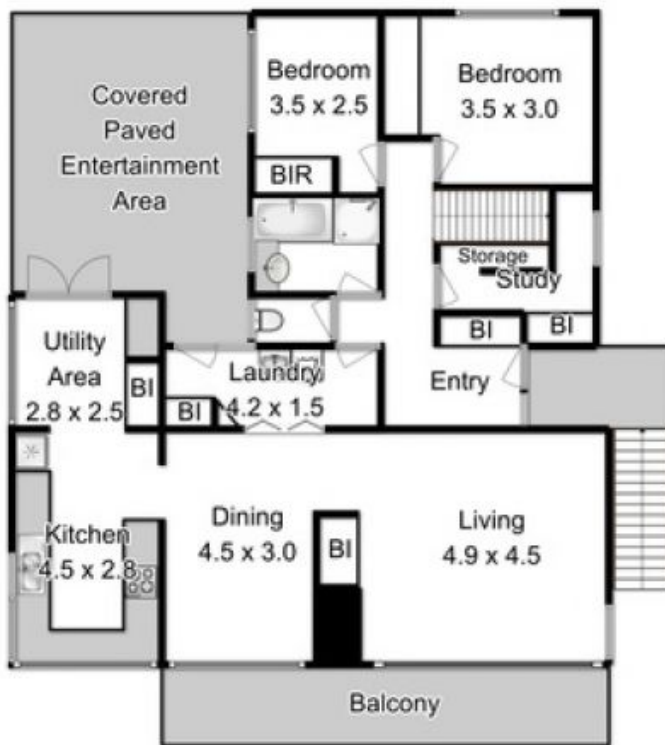
**Stuart Gifford**

Property Consultant

0419337054



**Ground Floor**



**First Floor**



**Second Floor**

Approx. Total Floor Area  
(including Garage and Utility Room): 232 Sqm



Fixtures and Fittings are for display only and not to scale.

This floor plan is a sketch for illustration.

All measurements are internal and approximate.

Produced by open2view.com

