



339 Brighton Road PONTVILLE, TAS



## FANTASTIC COUNTRY LIFESTYLE ONLY 25 MINUTES FROM HOBART

This home was originally constructed for the Chief Executive of Brighton Council - and it was built to last. The exterior walls are sandstone bricks sourced from a local quarry which helps the property blend in with the many sandstone homes that are a feature of Pontville.

The layout of this home is well thought out as the two separate lounge areas are linked to each other by the kitchen- dining area.

From the front entry you are taken to the sunny formal lounge room that offers wood heating and an outlook into the lovely front garden.

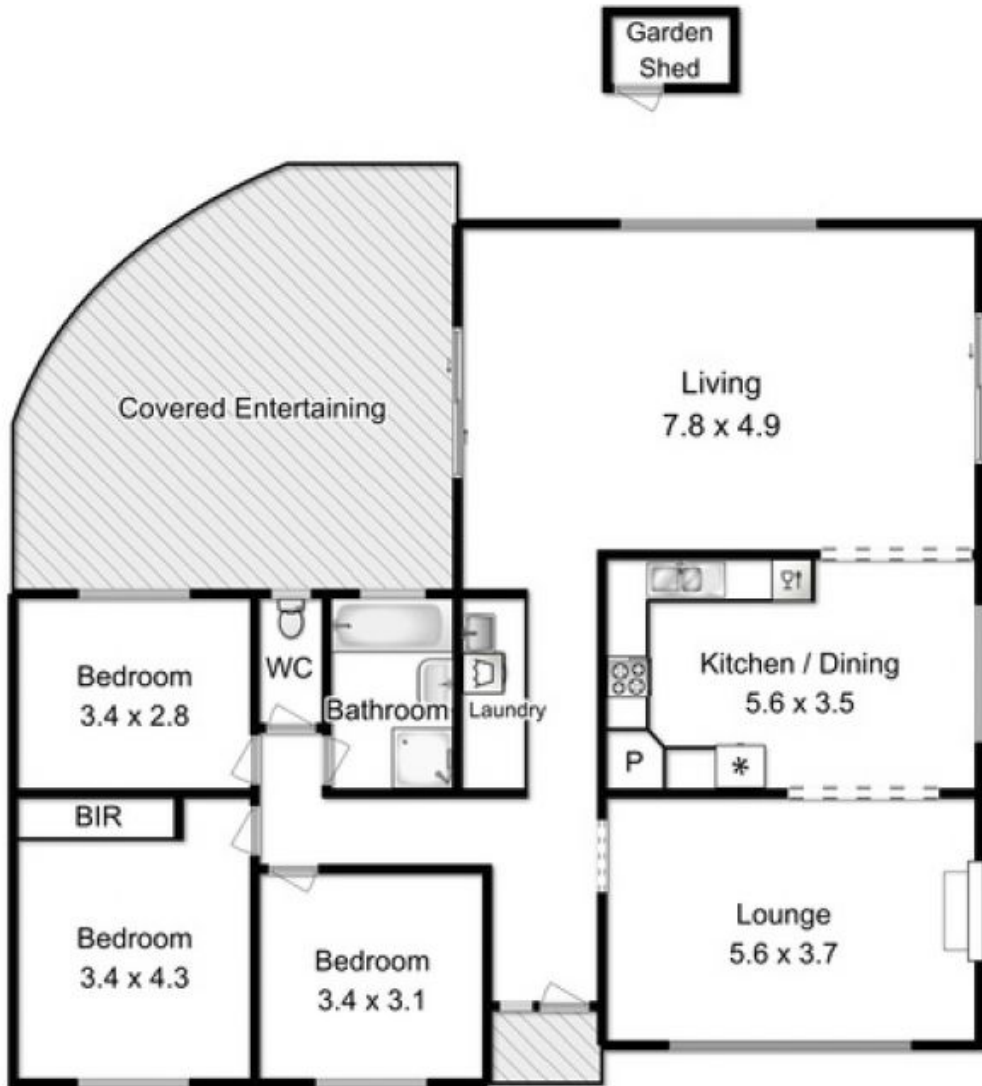
Adjoining the kitchen dining area is a large informal lounge area which has direct access to the leafy garden on one side and a private undercover area off the opposite side offeri

**Council Rates:** \$1,107.00/year (approx)

**Water Rates:** \$1,000.00/year (approx)

**Stuart Gifford**  
Property Consultant

0419337054



Total Approx. Floor Area : 150 sqm



All measurements are internal and approximate.  
 This plan is a sketch for illustration, not valuation.  
 Produced by Open2view.com