



50 Augusta Road LENA VALLEY, TAS



CLASSIC CIRCA 1925 SOLID BRICK 151m2 FAMILY ENTERTAINER OVER TWO LEVELS

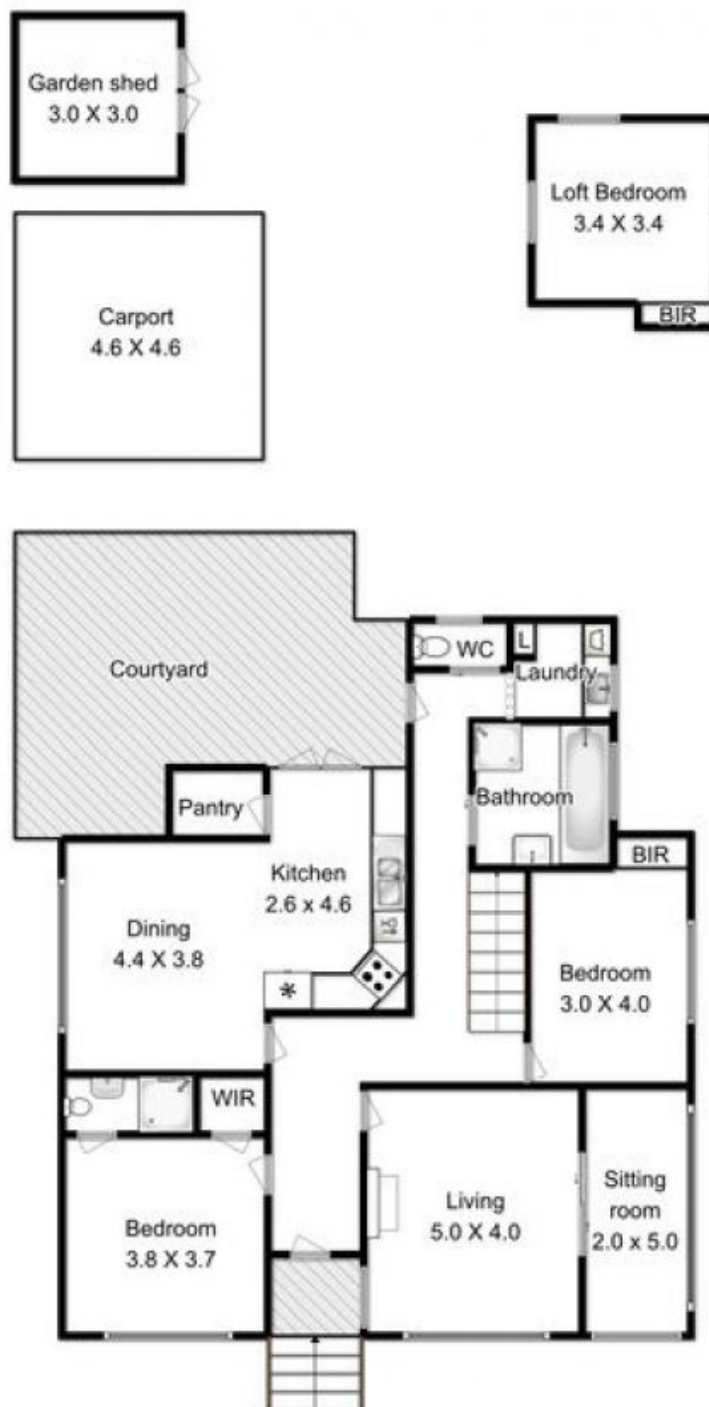
From the front facade you would assume this home is only on one level but it has been cleverly extended offering more accommodation than you expect, featuring beautiful lead lights, polished Tasmanian oak floors and a large outdoor entertainment area.

A fabulous home that has been tastefully renovated with today's living standards in mind, whilst retaining all of the character and charm of the era, wide skirtings, high ceilings, fireplaces and fretwork have been preserved in each area of the home.

From the wide entry of the home you are taken to a sunny north facing formal lounge room with gas ducted heating and in built wood heating for use when the occasion arises. Adjoining the lounge room is a room that can serve many functions, containing quality blinds and built in shelves for that book collection it is especially suited as a sunroom, office or

Stuart Gifford
Property Consultant

0419337054



Total Approx. Floor Area : 151 sqm
 Total Approx. Outbuilding Area : 33 sqm



All measurements are internal and approximate.
 This plan is a sketch for illustration, not valuation.
 Produced by Open2view.com