



12 Chablis Court BERRIEDALE, TAS



CONTEMPORARY FAMILY LIVING AT ITS BEST

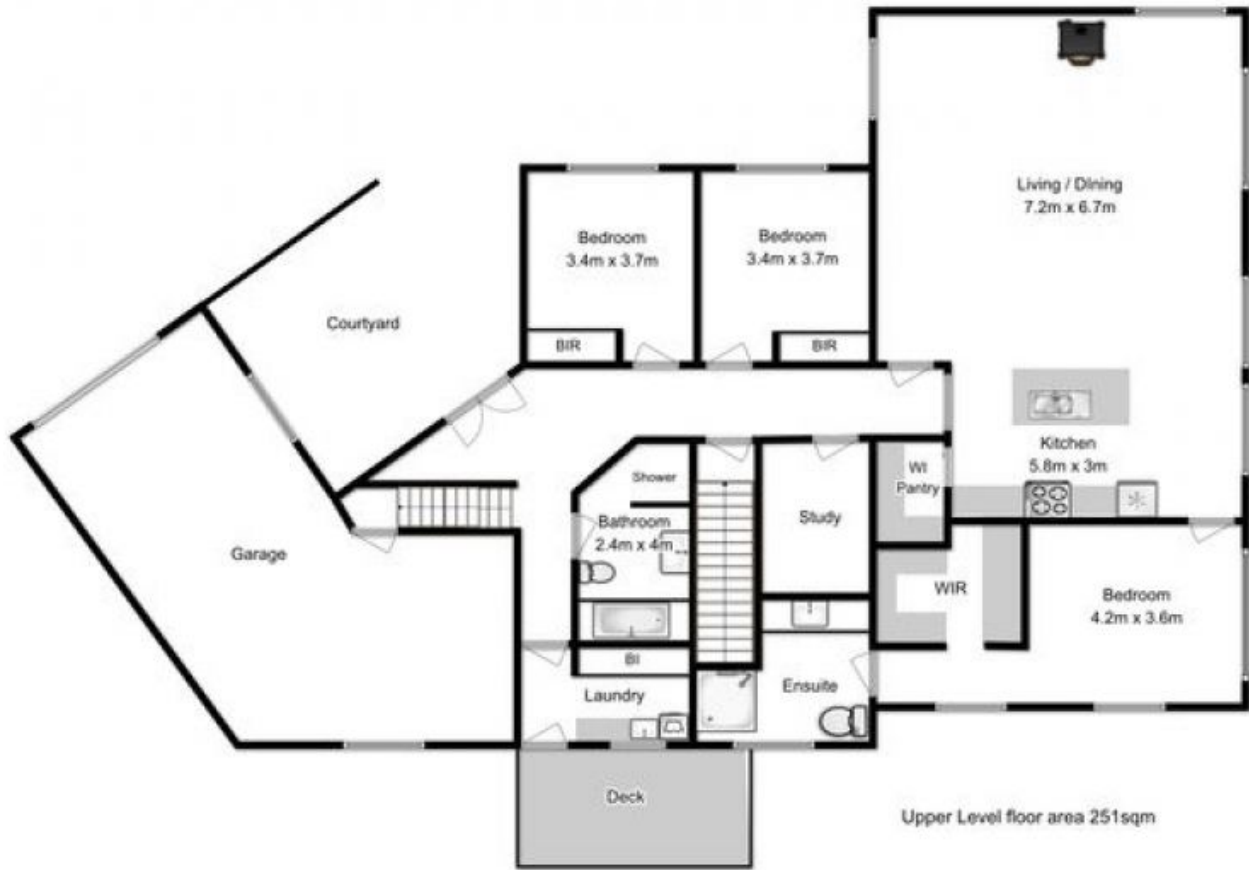
This stylish and well-designed modern home offers the very best of contemporary family living. Occupying a prized elevated position overlooking the vines of Moorilla, this home boasts stunning panoramic views to the Bowen Bridge, Mt Direction, Otago, MONA and Elwick. Built to a high standard with quality fixtures and fittings, a chic design aesthetic and superb attention to detail has been executed throughout to provide a lifestyle of relaxed comfort and convenience.

Wake up to the ever changing vista every morning in the private and opulent master suite. This room has a substantial walk in robe and tastefully decorated ensuite bathroom with double shower and bespoke joinery. Two further double bedrooms, both with built in robes are serviced by a central family bathroom with bathtub. The study and the laundry with good s

Mel Shutt

Property Consultant

0428428884



This floorplan is a sketch for illustration only
 Not to scale
 All measurements are internal and approximate
 Produced by open2view.com for Ripple Realty



Lower Level floor area 118sqm