



11 Miroll Place MOONAH, TAS



## CONVENIENT LOCATION WITH GORGEOUS OUTLOOK

Centrally located homes that offer the ultimate in convenience AND with views to the Derwent River AND in this price bracket are hard to come by.

The highly sought-after suburb of Moonah offers a fabulous lifestyle - regular bus services, many quality schools, major shopping precincts and eateries at your doorstep, plus only 5 kms to Hobart CBD making this an ideal place in which to live or invest.

**Council Rates:** \$1,300.00/year (approx)

**Water Rates:** \$880.00/year (approx)

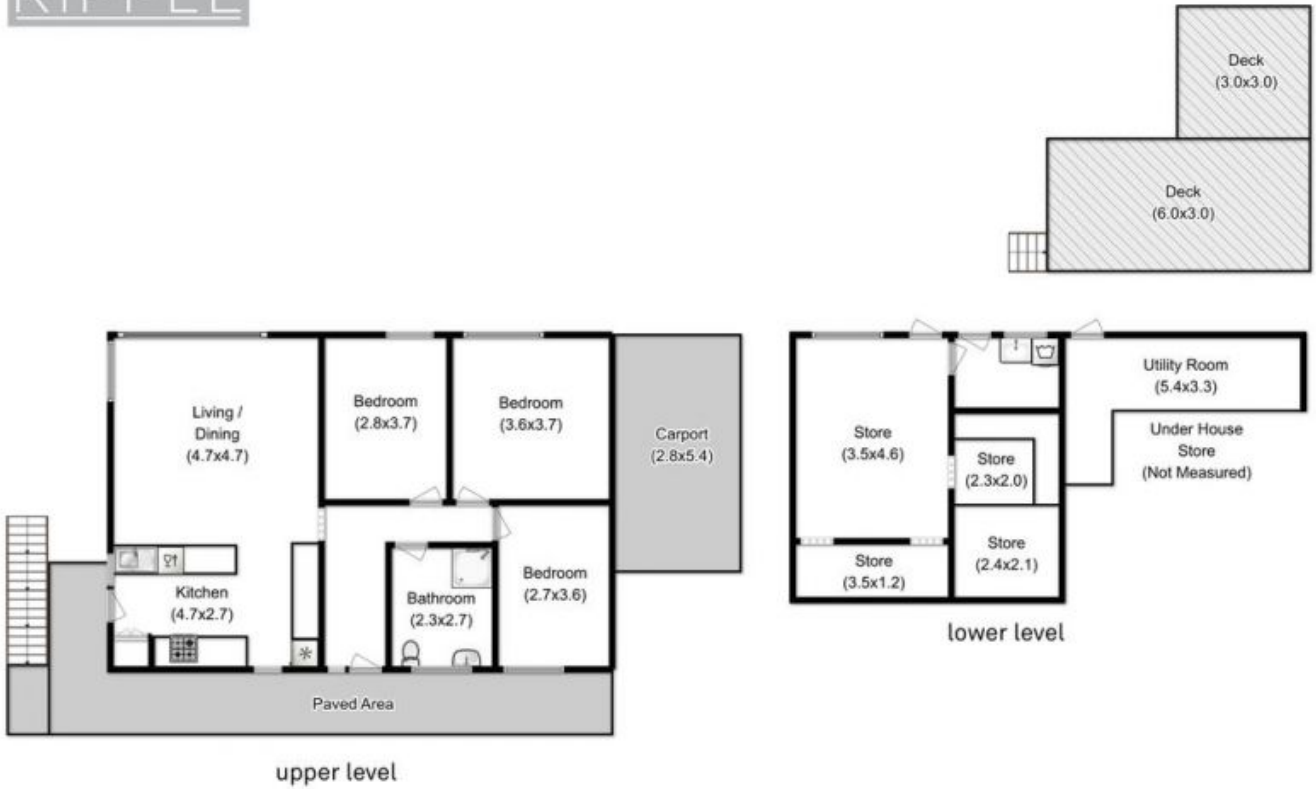
"We have obtained all information in this document from sources we believe to be reliable; however, we cannot guarantee its accuracy. Prospective purchasers are advised to carry o

**Warwick Page**

Director & Real Estate Agent

0474122717

# RIPPLE



All measurements are internal and approximate.  
This plan is a sketch for illustration, not valuation.  
Produced by Open2view.com for Ripple.

Approx. house area : 90 sqm  
Approx. lower level area : 50 sqm

