



340 Macquarie Street SOUTH HOBART, TAS



SOPHISTICATED TOWNHOUSE WITH ORIGINAL FEATURES

A well-designed and tastefully implemented renovation has transformed this heritage terrace into a chic contemporary townhouse, seamlessly combining classic original features with stylish modern updates. With mountain views from the front verandahs and an fabulous location, this home is perfect for purchasers seeking city fringe living or investors looking to add to their portfolio.

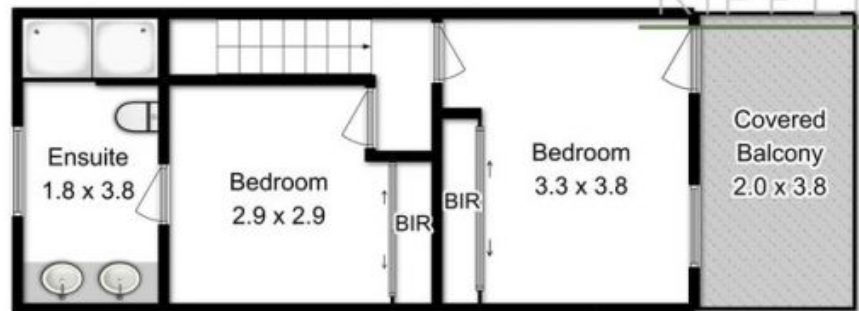
Intelligent use of space maximises the floorplan to provide multiple living areas. The entry level accommodates a living room enhanced by an original fireplace with remote controlled heater and mantle, exposed brick accent wall and timber floorboards. Adjacent is the semi open-plan dining room and kitchen. The dining room retains similar character features as the living room, also with gas fire in original surrounds for cosy nights in entertaining friends. The kitchen is a statement in contemporary design with quality joinery and appliances and a soothing monochromatic palate. Offering relaxed, easy living, double glaze

Penny Trewin

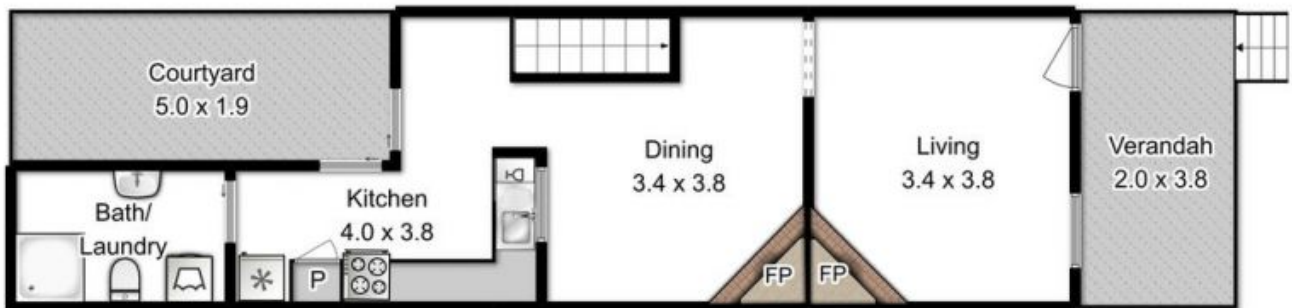
0408 505 470



Upper Level



Lower Level



All measurements are internal and approximate.
This plan is a sketch for illustration, not valuation.
Produced by Open2view.com for Ripple.

Approx. floor area : 82 sqm

