



11 McLean Court ROSETTA, TAS

 5  3  2

SUPERB WATER VIEWS WITH A MODERN HOME OFFERING!

FLEXIBLE FAMILY LIVING AND SELF CONTAINED ACCOMMODATION!

Set across two storeys, the upper level forms the heart of the home with a generously proportioned open living space. With a sunny northerly aspect, the well-equipped kitchen with Chef appliances, walk in pantry and dishwasher is the heart of the extensive open plan living and casual dining area!

Large tinted windows and a glass slider capture the ever changing vista beyond with access onto the balcony to create a seamless indoor/outdoor living space to soak in the views and allow you to relax and chill! The adjacent formal dining room offers further living to enjoy those special dinners with friends and family. The fully ducted reverse cycle heating

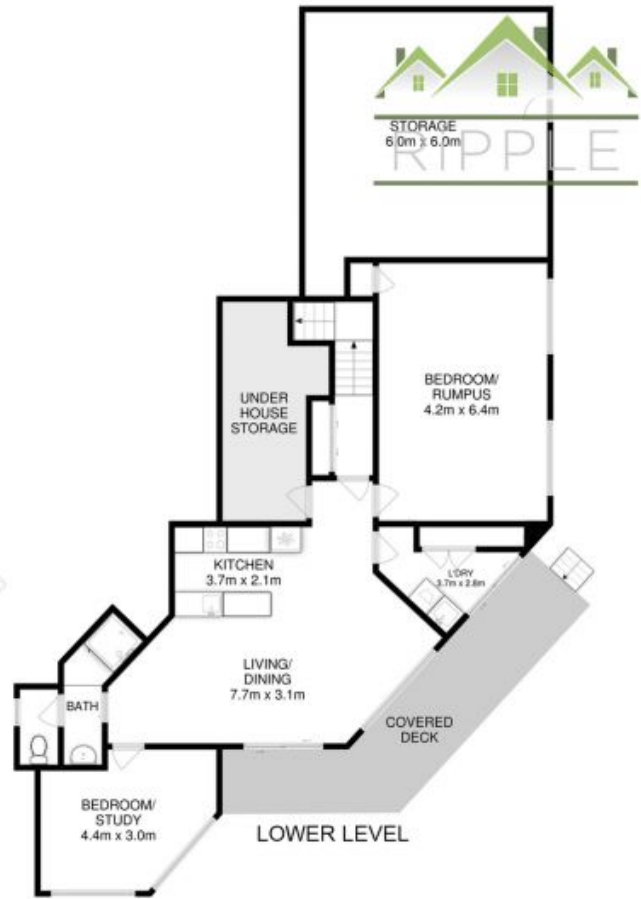
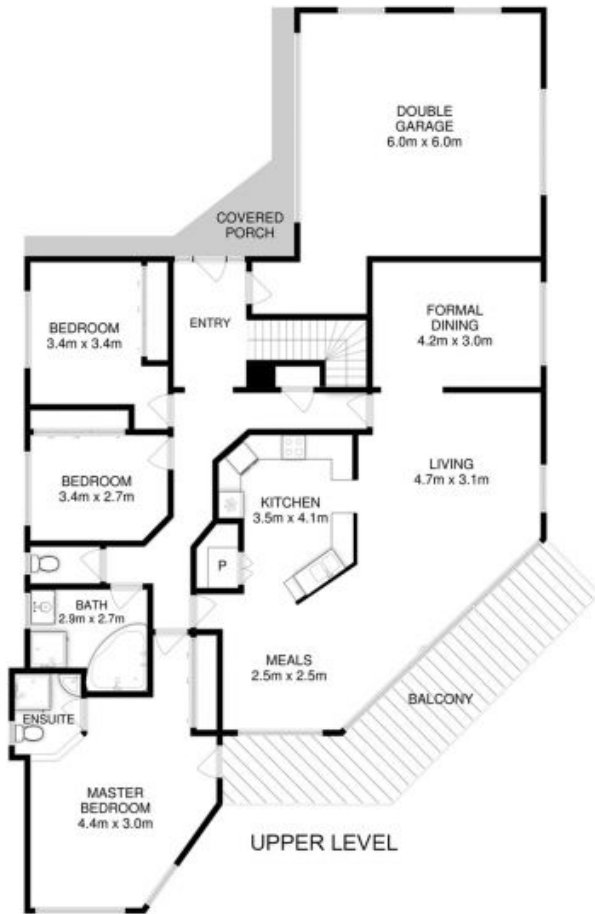
Council Rates: \$2,200.00/year (approx)

Water Rates: \$1,000.00/year (approx)

Mel Shutt

Property Consultant

0428428884



All measurements are internal and approximate.
This plan is a sketch for illustration, not valuation.
Produced by Open2view.com for Ripple.

Approx. floor area : 305 sqm
Approx. storage area : 37 sqm

