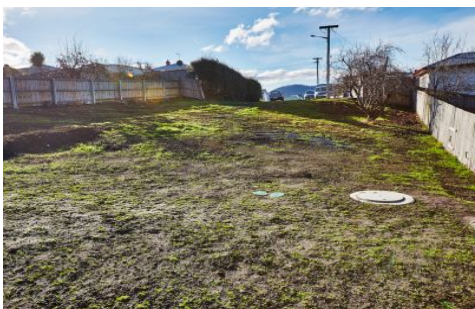


RIPPLE



19A Milton Crescent MOONAH TAS

Blink and you might miss this amazing opportunity to secure a level fully serviced block in the highly coveted area of Moonah.

First home builders, retiree's and developers will all no doubt be quick to view this rare offering.

There is a building envelope of 10 x 15 meters approved by council (email Angelina for your copy) which cuts down your anticipated build time by months.

Imagine a brand new home that you can design to maximise your views, privacy and sunshine in an established neighbourhood so close to the thriving Moonah strip, mere moments from the CBD and in proximity to

Type : Land

View : <https://www.ripplere.com.au/4961797>



Angelina Drobina
0362313483

[For full version visit the website](https://www.ripplere.com.au)

<https://www.ripplere.com.au>