



59 Allumba Street HOWRAH, TAS



Perfect position, close to everything

Your imagination is the limit for this sturdy three bedroom home in a popular and convenient location, close to local services and recreation areas. There is so much potential here to make this the perfect abode for your needs.

Built 1987 with solid block construction, this home is set over two storeys and has a versatile floorplan that will help you realise your vision for this property.

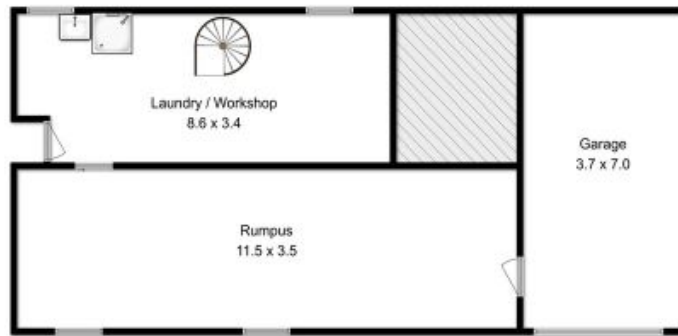
The upper level consists of a comfortable living and dining area with lovely views over Wentworth Park oval, the Derwent River and Mt Wellington beyond.

Two existing bedrooms have generous built-in wardrobe space, an additional room off the kitchen offers the versatility to utilise this as either an additional bedroom or a second living area.

Mel Shutt

Property Consultant

0428428884



All measurements are internal and approximate.
This plan is a sketch for illustration, not valuation.
Produced by Open2view.com for Ripple.

Approx. floor area : 225 sqm
(including garage)