

18A Queen Street BELLERIVE, TAS



SEEING IS BELIEVING

Agents are besieged with requests from executive down-sizers for impeccable homes in a platinum location that is future proofed for all events in life and inevitably homes we have on offer fall just shy of the mark.

"it is lovely, but it has stairs"

"we really like it, but the gardens are too large to manage"

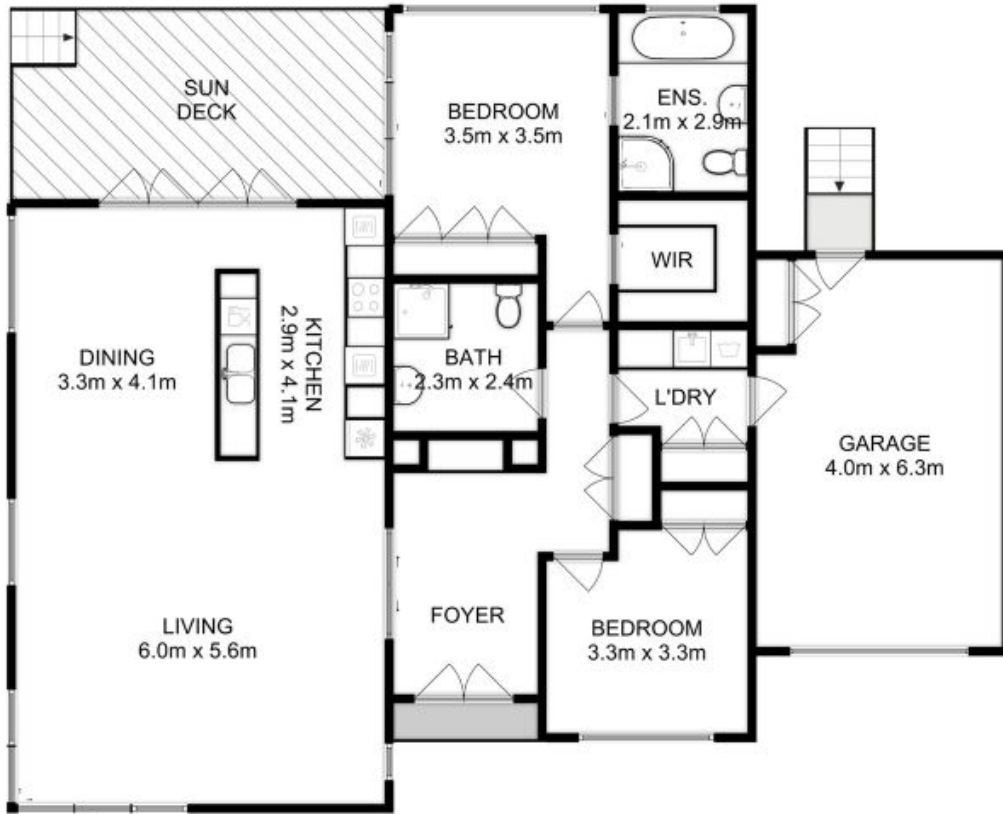
"we don't feel it is private enough"

"it does not feel secure enough"

Angelina Drobina

Principal

0416163014



All measurements are internal and approximate.
 This plan is a sketch for illustration, not valuation.
 Produced by Open2view.com for Ripple.

Approx. floor area : 160 sqm
 (Including Garage)

