

34 Sunset Drive GARDEN ISLAND CREEK, TAS



3



1



4

Secluded and tranquil by the waters' edge

Located right by the waters' edge, with magnificent beachfront views over to Garden Island - this tranquil home is perfectly positioned for those who love kayaking, fishing, swimming, or a peaceful stroll on the sand. This is a must-see for anyone dreaming of a beachside lifestyle.

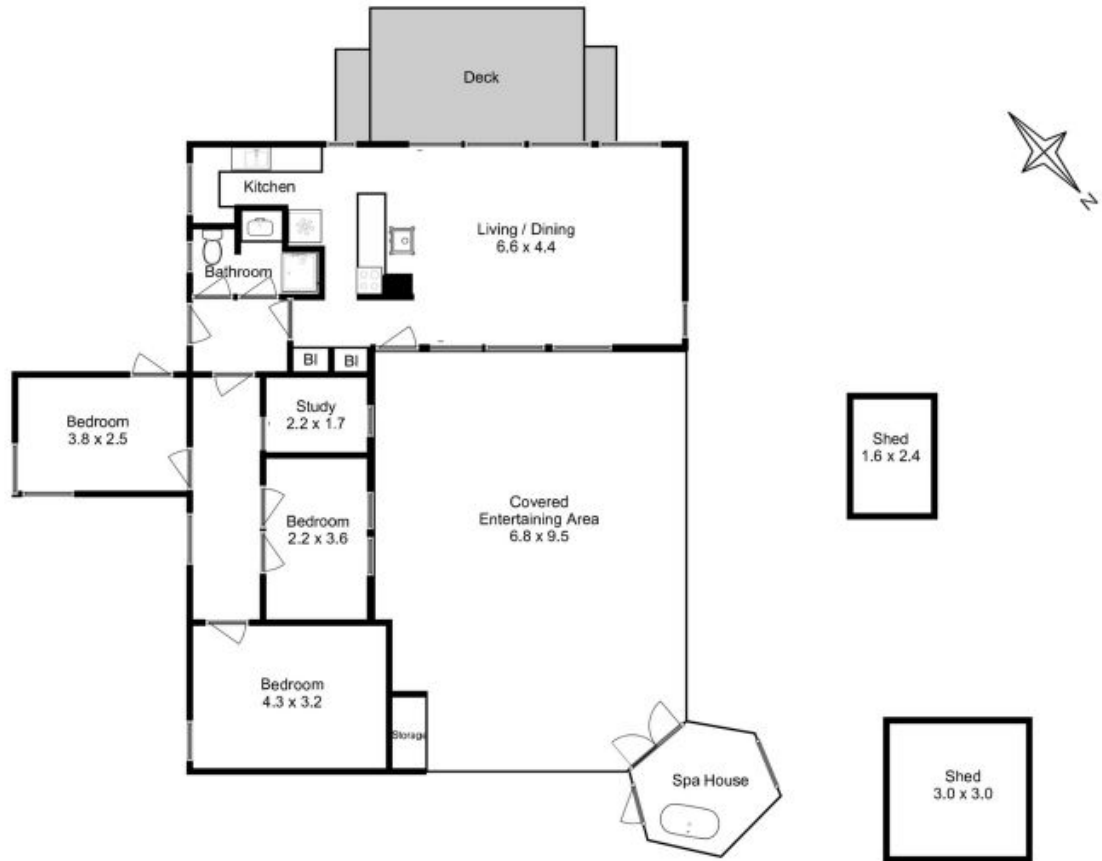
Built in 1976, this 3 bedroom home is well suited to full-time living, offering a relaxed holiday feel every day. Alternatively, this could be the perfect weekend getaway or appealing investment. In fact, this property has already been successfully utilised as an Airbnb, with good return.

A large undercover enclosed patio at the rear of the dwelling can be used as an additional living space, with enough room for a pool table and plenty of furniture. This spacious ar

Mel Shutt

Property Consultant

0428428884



All measurements are internal and approximate.
 This plan is a sketch for illustration, not valuation.
 Produced by Open²view.com for Ripple.

Approx. floor area : 107 sqm
 Approx. outbuilding area : 13 sqm