



32 Adelaide Street SOUTH HOBART, TAS



4



2



2

## PLATINUM LOCATION - STUNNING FACADE - ONCE IN A LIFETIME OPPORTUNITY

Ripple are privileged to present this stately home in the highly coveted Adelaide street to the market for the first time in decades.

On the top side of this wonderfully wide enchanting street - much loved for the stunning character homes, sits number 32 with its striking facade, elegant lead light dual bay windows, solid sandstone foundations and ample grounds.

**Warwick Page**

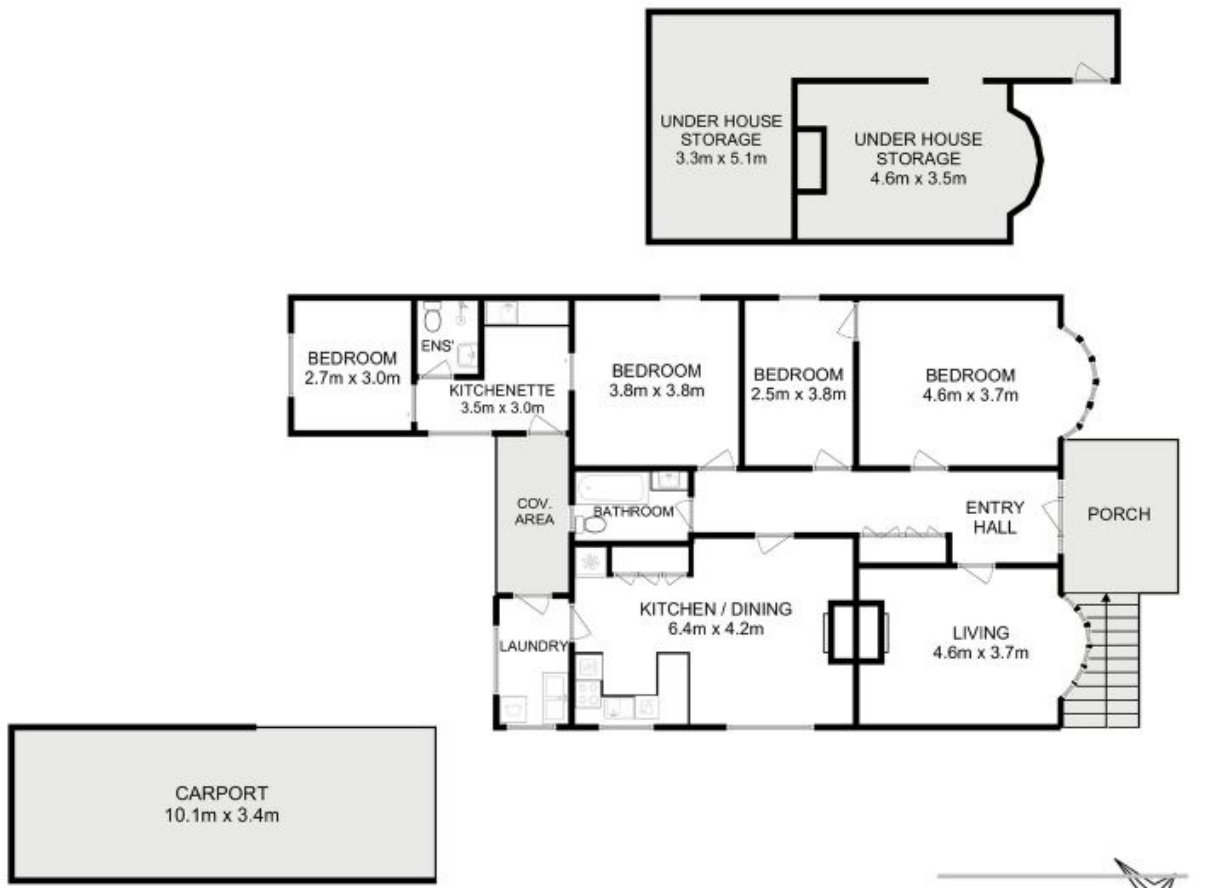
Director & Real Estate Agent

0474122717

**Angelina Drobina**

Principal

0416163014



All measurements are internal and approximate.  
 This plan is a sketch for illustration, not valuation.  
 Produced by Open2view.com for Ripple.

Approx. floor area : 137 sqm

