



1/4 Walgett Place GLENORCHY, TAS



2



1



2

Ideal opportunity - occupy or invest

Positioned on a quiet street and close to the many amenities Glenorchy has to offer, this attractive and low maintenance duplex unit is sure to appeal. Whether you are searching for an ideal first home, investment or looking to downsize - this property ticks all the boxes.

The home has an appealing street frontage, with the neat and trim front garden full of flowers, offering a warm welcome home.

The many shops and services in the Glenorchy shopping precinct are just a short walk away; and with Chapel Street Reserve, Tolosa Park and a range of schools and childcare facilities close at hand, the local area has all your day-to-day needs covered. Access to the city is a breeze - only a 15 minute drive to the centre of Hobart or a short walk around the corner to public transport, as well as easy access to the Intercity Cycleway in central Gle

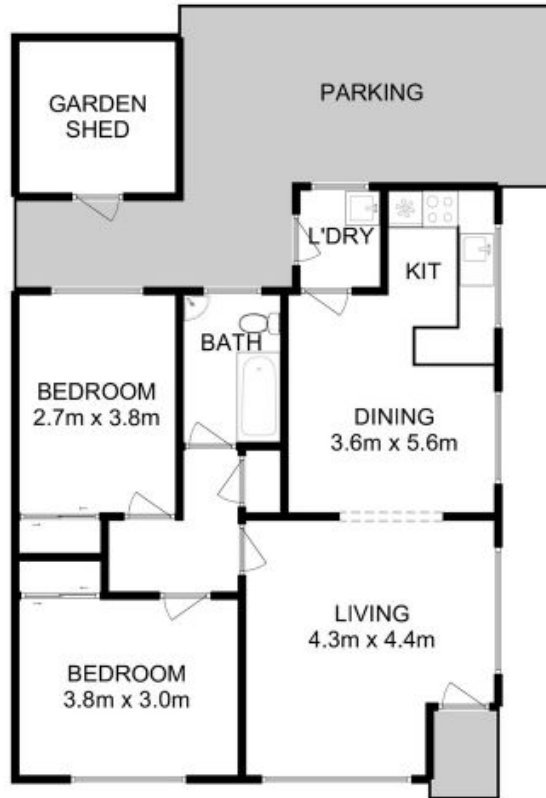
Council Rates: \$1,268.00/year (approx)

Water Rates: \$1,000.00/year (approx)

Warwick Page

Director & Real Estate Agent

0474122717



All measurements are internal and approximate.
This plan is a sketch for illustration, not valuation.
Produced by Open2view.com for Ripple.

Approx. floor area : 79 sqm
Approx. outbuilding area : 16 sqm

