

15 Mariah Crescent OAKDOWNS, TAS



Relaxed and comfortable lifestyle awaits

Ideally positioned to capture views of kunanyi/Mt Wellington and glimpses of the Derwent River, this attractive three-bedroom home offers an irresistibly relaxed and low maintenance lifestyle.

Built around 2010 with sturdy brick construction, the single level property will appeal to those looking for an ideal family home or with aspirations to expand their investment portfolio.

Council Rates: \$1,650.00/year (approx)

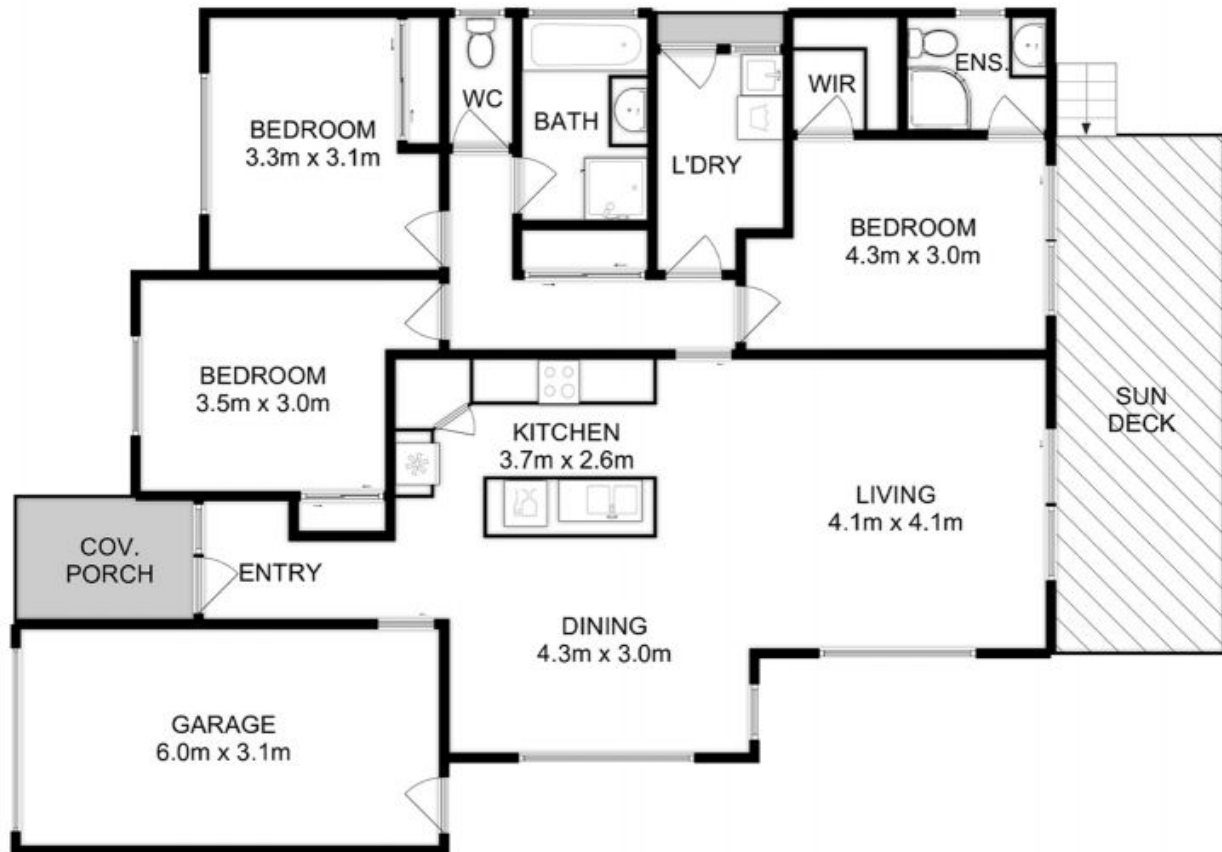
Water Rates: \$1,050.00/year (approx)

Expect an easy 15-minute commute to central Hobart, and extensive shopping and services at nearby Shoreline Shopping Centre or Eastlands - about 10 minutes' drive away. There is al

Warwick Page

Director & Real Estate Agent

0474122717



All measurements are internal and approximate.
 This plan is a sketch for illustration, not valuation.
 Produced by Open2view.com for Ripple.

Approx. floor area (inc. garage) : 143 scm

