



2/19 Brushy Creek Road LENAH VALLEY, TAS



3



2



2

Contemporary, Comfortable and Convenient

Set in a quiet and peaceful location close to the city and nearby conveniences, this stylish three-bedroom villa home built in 2021 features a sunny northerly aspect, ideal floorplan and design, plus all the modern comforts.

With quality fixtures, a 7.5 energy efficiency rating, ducted heating and cooling, and ample storage space - this property has low-maintenance living all wrapped up.

Get some fresh air and exercise in Ancanthe Park, which is located just at the end of Brushy Creek Rd or take a further stroll to John Turnball Park which includes a dedicated dog exercise area. Lenah Valley is an entry point to Wellington Park, so there are numerous w

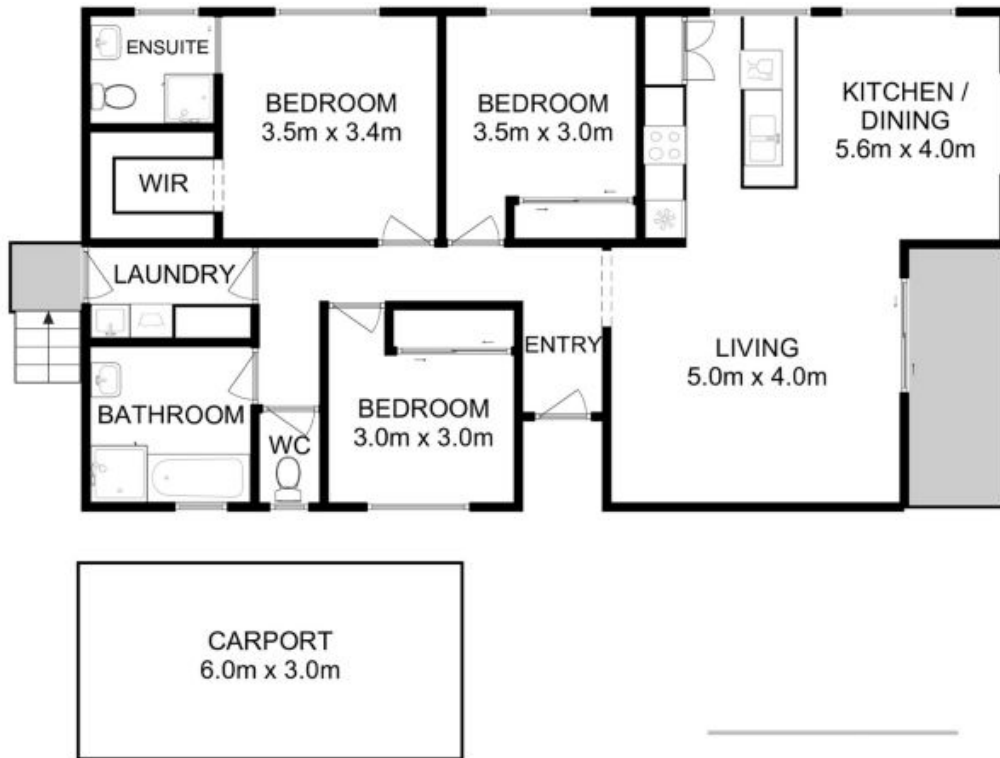
Council Rates: \$1,900.00/year (approx)

Water Rates: \$1,036.00/year (approx)

Warwick Page

Director & Real Estate Agent

0474122717



Approx. floor area : 113 sqm



All measurements are internal and approximate.
 This plan is a sketch for illustration, not valuation.
 Produced by Open2view.com for Ripple.