



58 Cascade Road SOUTH HOBART, TAS



4



2



1

Magnificent family-friendly lifestyle

Behind the attractive street frontage of this circa 1895 property, a transformation has taken place. With rugged and majestic kunanyi/Mt Wellington as a backdrop, this impeccably presented South Hobart property is now a luxurious and contemporary family home - perfecting a modern and elegant look with all conveniences catered for.

The property features double glazed windows, a new roof, and updated wiring and plumbing. And with four bedrooms, two bathrooms and a generous multi-purpose utility space - there is plenty of room for the whole family.

The four bedrooms are all spacious and light, two have generous built-in storage, and one with ensuite. Another bedroom opens onto a snug sunroom, which would make a fantastic playroom or parents' retreat. Together with a second sunroom at the entrance to the property,

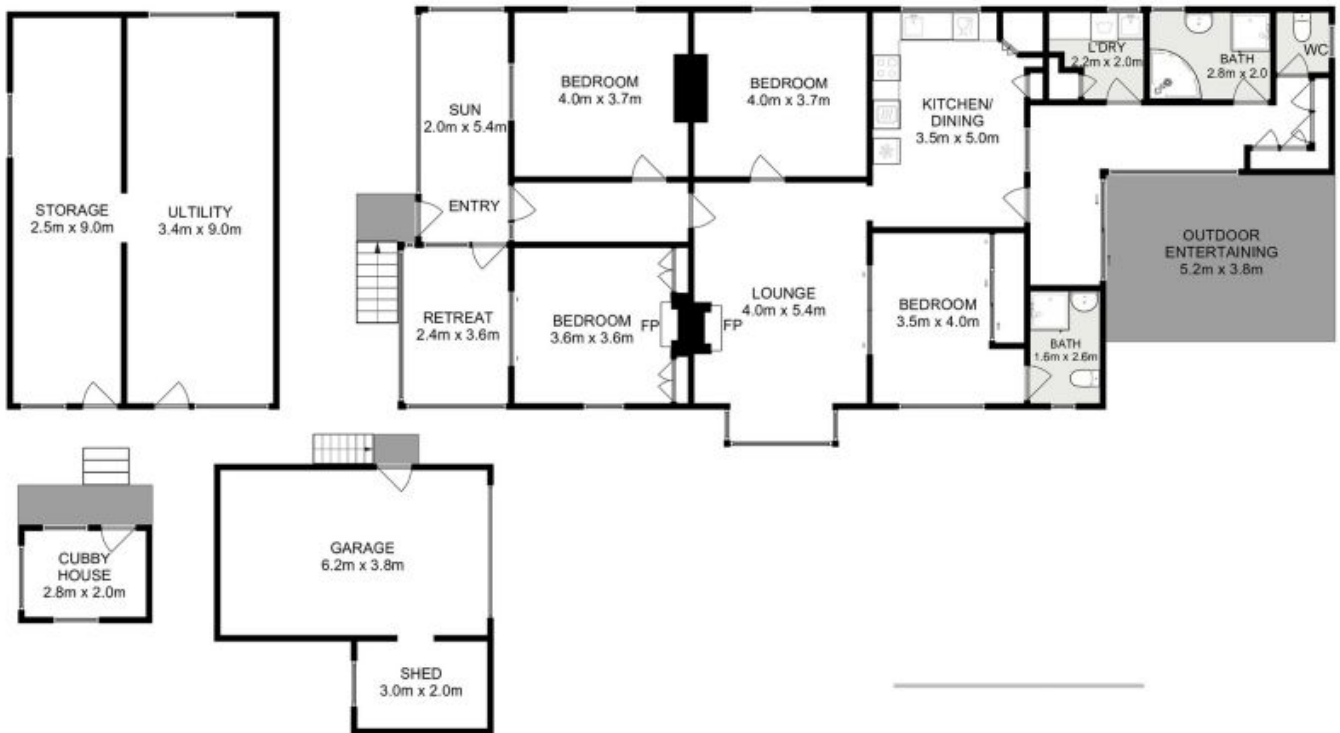
Council Rates: \$2,295.00/year (approx)

Water Rates: \$1,000.00/year (approx)

Warwick Page

Director & Real Estate Agent

0474122717



All measurements are internal and approximate.
 This plan is a sketch for illustration, not valuation.
 Produced by Open2view.com for Ripple.

Approx. floor area : 170 sqm
 Approx. outbuilding area (Inc Utility) : 92 sqm

