



4 Alwyn Road LENA VALLEY, TAS



Stunning retro style

Ever wanted to time travel? Now you can fly back to the 1970s in your very own Tardis!

It's easy to believe that this expansive and sunny home could be bigger on the inside, with up to 5 bedrooms and impressive living spaces behind its unassuming exterior, all with a unique and glorious retro style.

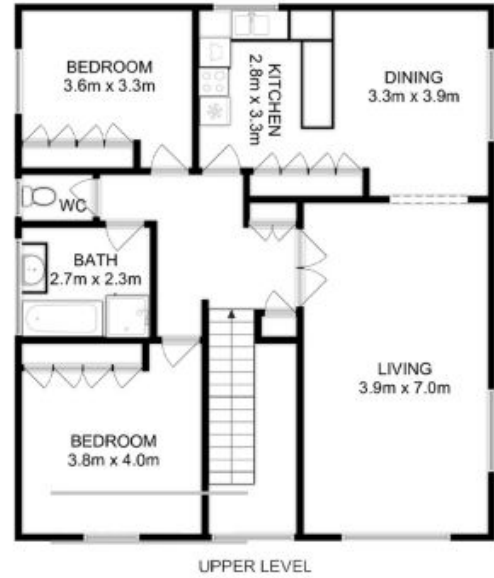
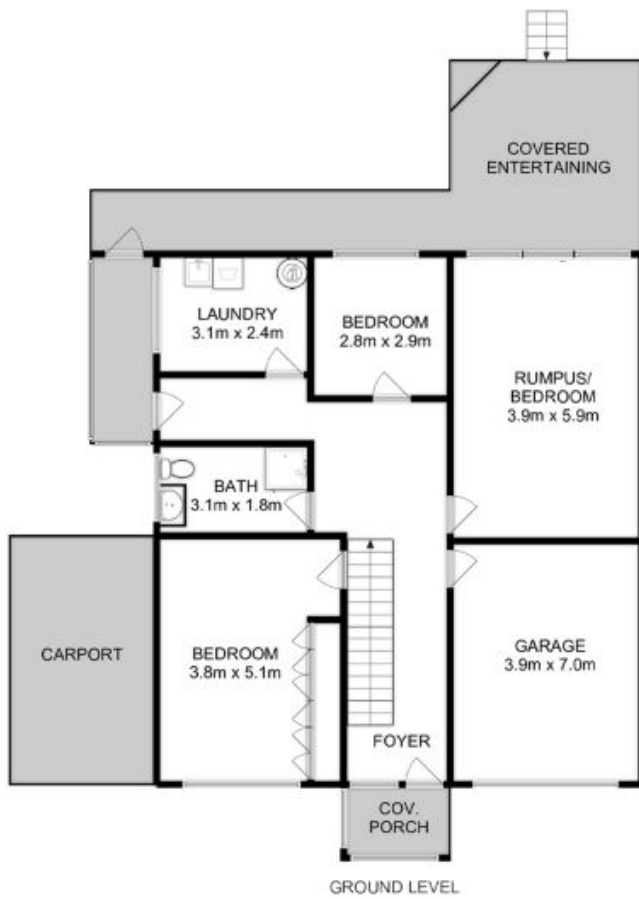
True to its vintage, this 1973-built property is well maintained and solid, with fantastic original features such as the yellow bottle glass windows. This could be the fun and funky home you never knew you needed, or a quality foundation for all your renovation dreams.

Upstairs is a generous dining and kitchen area with plenty of storage, where you can marvel at those fabulous views while you work; or relax in the inviting and comfortable lounge.

Mel Shutt

Property Consultant

0428428884



All measurements are internal and approximate.
 This plan is a sketch for illustration, not valuation.
 Produced by Open2view.com for Ripple.

Approx. floor area : 225 sqm

