



413 Cambridge Road MORNINGTON, TAS



RELAXED LOW MAINTENANCE LIVING IDEAL FOR INVESTMENT

Situated in a sunny, elevated position and boasting gorgeous views of the Meehan Ranges, this beautifully presented three-bedroom home offers a modern feel with low maintenance living.

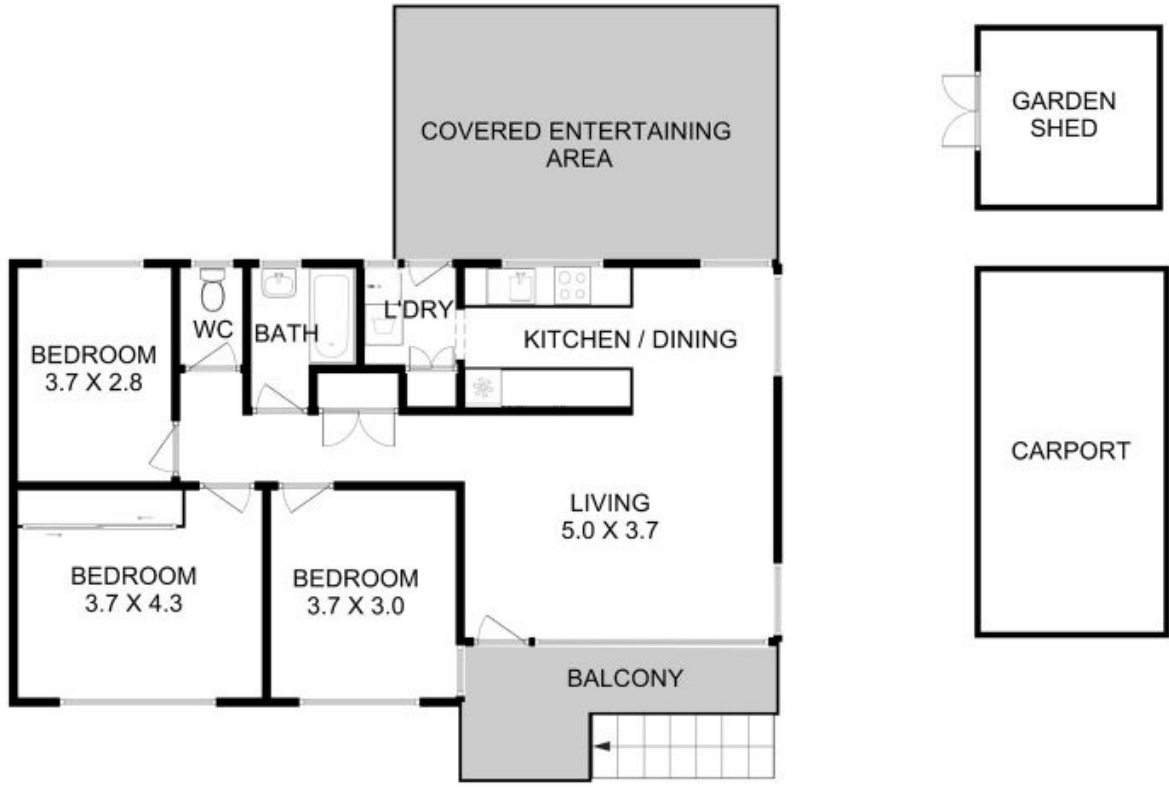
Built in 1969 this beautiful home provides three bedrooms, one bathroom and secure parking plus room for an additional three cars. With the added bonus of only a short three-minute commute to all the shops and services of Eastlands, this property is sure to suit many.

Outside you will find a low maintenance fully fenced yard, fire pit area, garden shed on a concrete slab and the undercover deck ideal for entertaining. This property is conveniently located just a short drive from Hobart's CBD, with plenty of schools and childcare in

Warwick Page

Director & Real Estate Agent

0474122717



All measurements are internal and approximate.
 This plan is a sketch for illustration, not valuation.
 Produced by Open2view.com for Ripple.

Approx. floor area : 90 sqm
 Approx. outbuilding area : 27 sqm

