



244 Derwent Avenue LINDISFARNE, TAS



Modern comforts and heritage charm

This spectacular and spacious 1910 federation home seamlessly blends modern conveniences with character-filled period features. Together with magnificent views and proximity to the many amenities in popular Lindisfarne, this three-bedroom family home offers an uncompromisingly comfortable lifestyle.

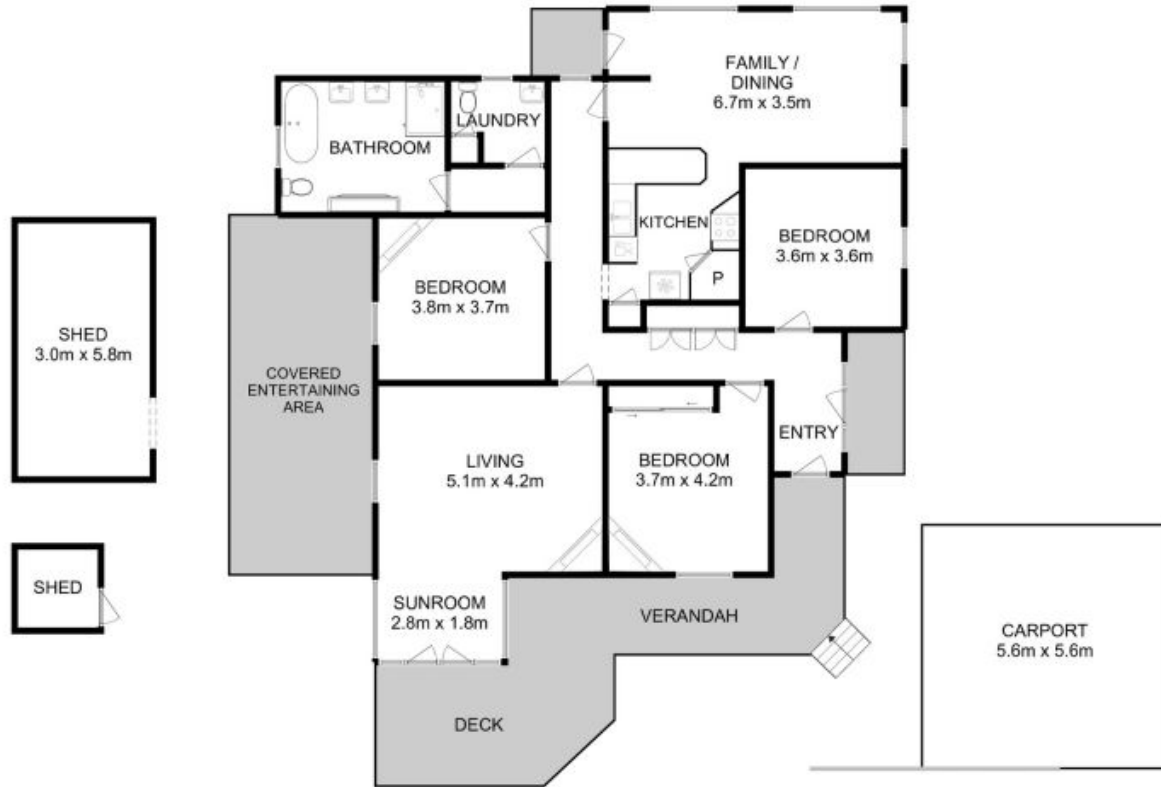
The home's elegant and light-filled living room includes a glorious feature fireplace and mantel, and the sunroom opens onto a wide deck with stunning views over the Derwent River and Tasman Bridge, to kunanyi/Mount Wellington, and Hobart's CBD beyond.

Smartly presented and sparkling white, the contemporary kitchen has quality appliances, ample storage, and is cleverly connected to the adjacent family dining room. The sleek and sizeable bathroom includes a double vanity, claw foot bath, walk-in shower, WC, and a fusio

Warwick Page

Director & Real Estate Agent

0474122717



All measurements are internal and approximate.
 This plan is a sketch for illustration, not valuation.
 Produced by Open2view.com for Ripple.

Approx. floor area : 156 sqm
 Approx. outbuilding area : 50 sqm

