



10 Elliott Road GLENORCHY, TAS



## Fantastic family home with views to match

Spruced up and stylish, this 1974-built three-bedroom property situated in a great position overlooking Glenorchy, is set over two levels and packed with features for comfortable family living.

Upstairs consists of a light and sunny living room, with a reverse cycle air conditioner to keep the space comfortable and cosy all year round. From here you can admire the absolutely spectacular views over the Derwent River to the rolling hills of the Eastern Shore beyond, and this glorious outlook extends through to the kitchen, which offers great storage and room for family dining.

Enter the lower level via spiral stairs or external access, where you'll find a third bedroom and second toilet, as well as a reception area which is currently utilised as an addit

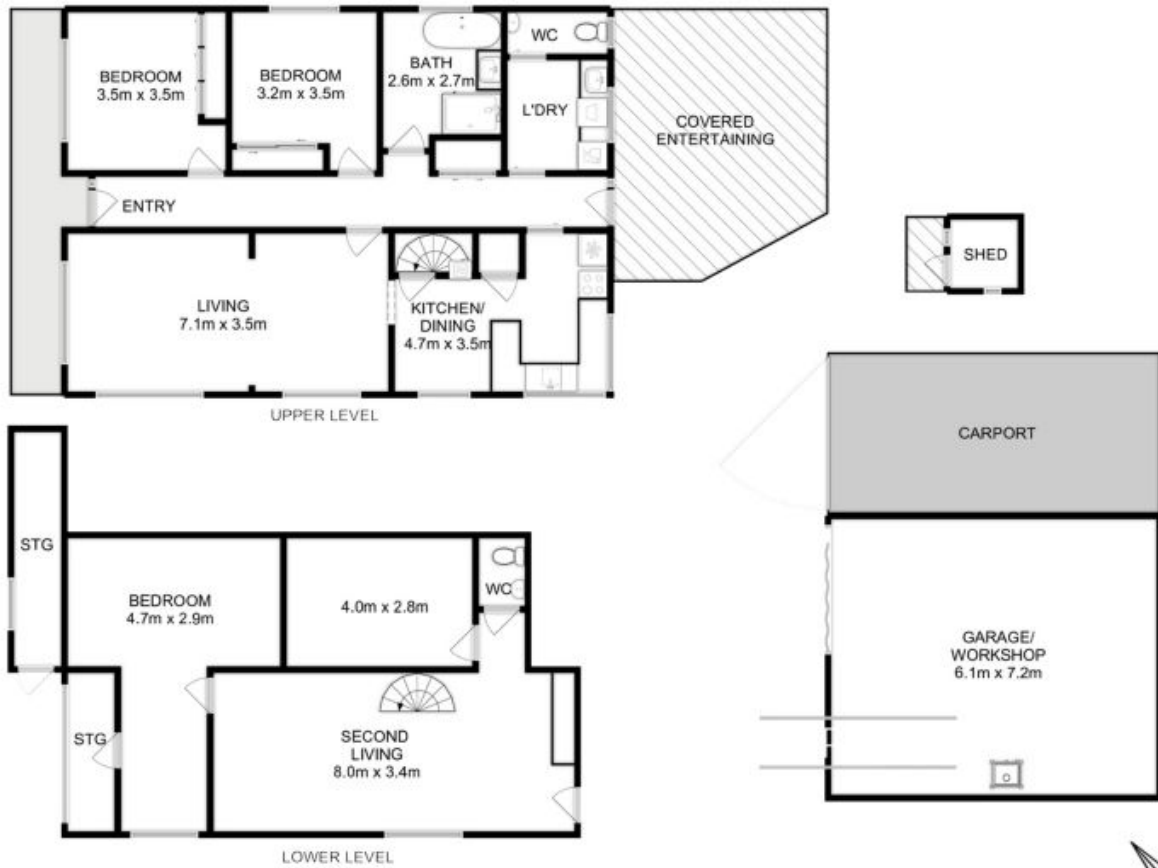
**Council Rates:** \$1,700.00/year (approx)

**Water Rates:** \$1,100.00/year (approx)

## Warwick Page

Director & Real Estate Agent

0474122717



All measurements are internal and approximate.  
 This plan is a sketch for illustration, not valuation.  
 Produced by Open2view.com for Ripple.

Approx. floor area : 186 sqm  
 Approx. outbuilding area : 46 sqm

