



41 Parramore Street ROSETTA, TAS



3



1



2

Comfortable family home in fantastic location

Neat as a pin and ideally positioned to make the most of the sun and sensational views, this much-loved property is offered to the market for the first time in 50 years!

Built around 1971, the three-bedroom family home features conveniences such as ducted heating throughout, floor and ceiling insulation, a security alarm, plus easy access to the many amenities of the northern suburbs.

Rosetta offers a proximal and quiet lifestyle - with central Hobart only fifteen minutes away, Glenorchy's retail precinct less than 10 minutes by car, plus Rosetta IGA for all your essential groceries. There are also a number of schools in the area, with both primary a

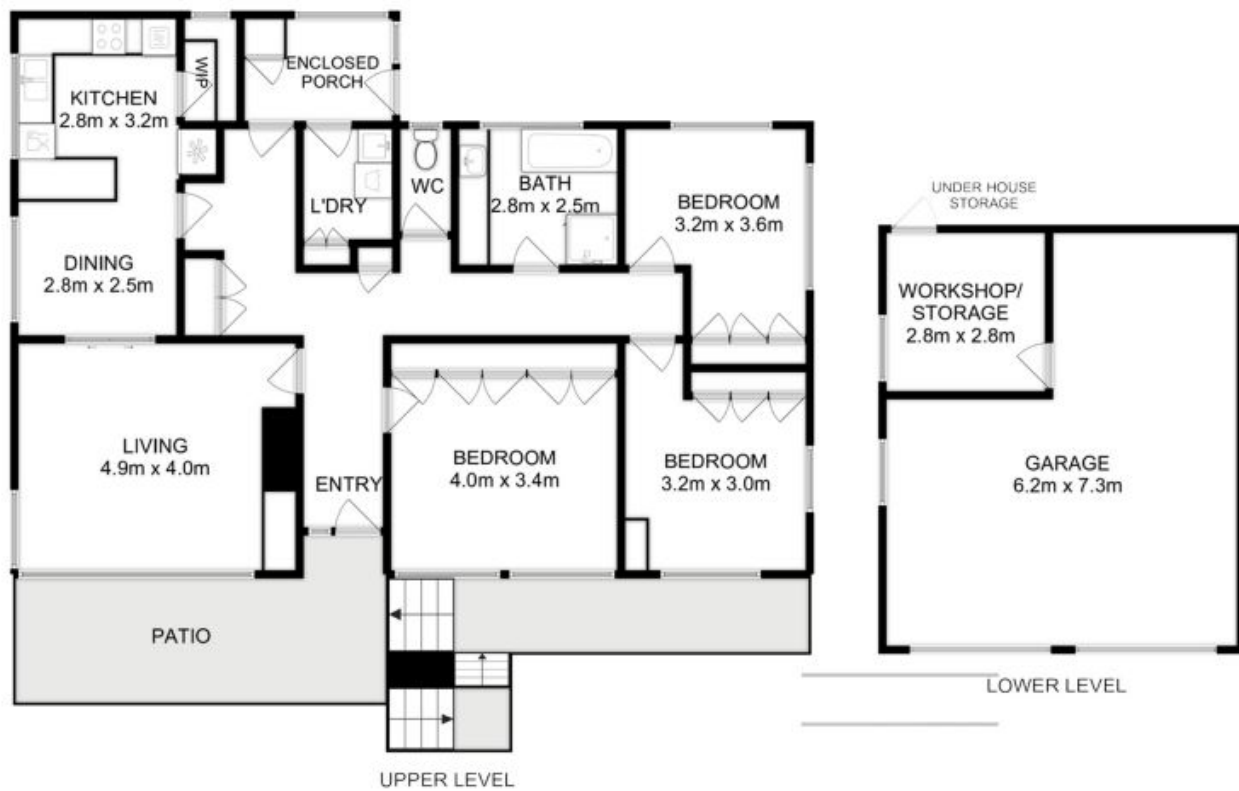
Council Rates: \$1,900.00/year (approx)

Water Rates: \$1,000.00/year (approx)

Warwick Page

Director & Real Estate Agent

0474122717



All measurements are internal and approximate.
 This plan is a sketch for illustration, not valuation.
 Produced by Open2view.com for Ripple.

Approx. floor area : 176 sqm

