



169 Chapel Street GLENORCHY, TAS



Glorious Glenorchy abode

Spruced up and stylish, this beautifully presented three-bedroom home located in a fantastic Glenorchy location makes a great impression from first sight. With a neat and trim front garden and a new picket fence, its undeniable street appeal offers a charming sight to welcome you home.

Built in 1956 and rejuvenated with new carpet and a fresh coat of paint inside and out, this low maintenance and spacious gem will appeal to those who love a vintage home but squirm at the thought of renovating.

With all the services of Glenorchy's retail precinct only five minutes away and less than 20 minutes to central Hobart, plus local schools and a regular bus service all nearby - you will be ideally positioned to access the area's many amenities. With oodles of outdoor a

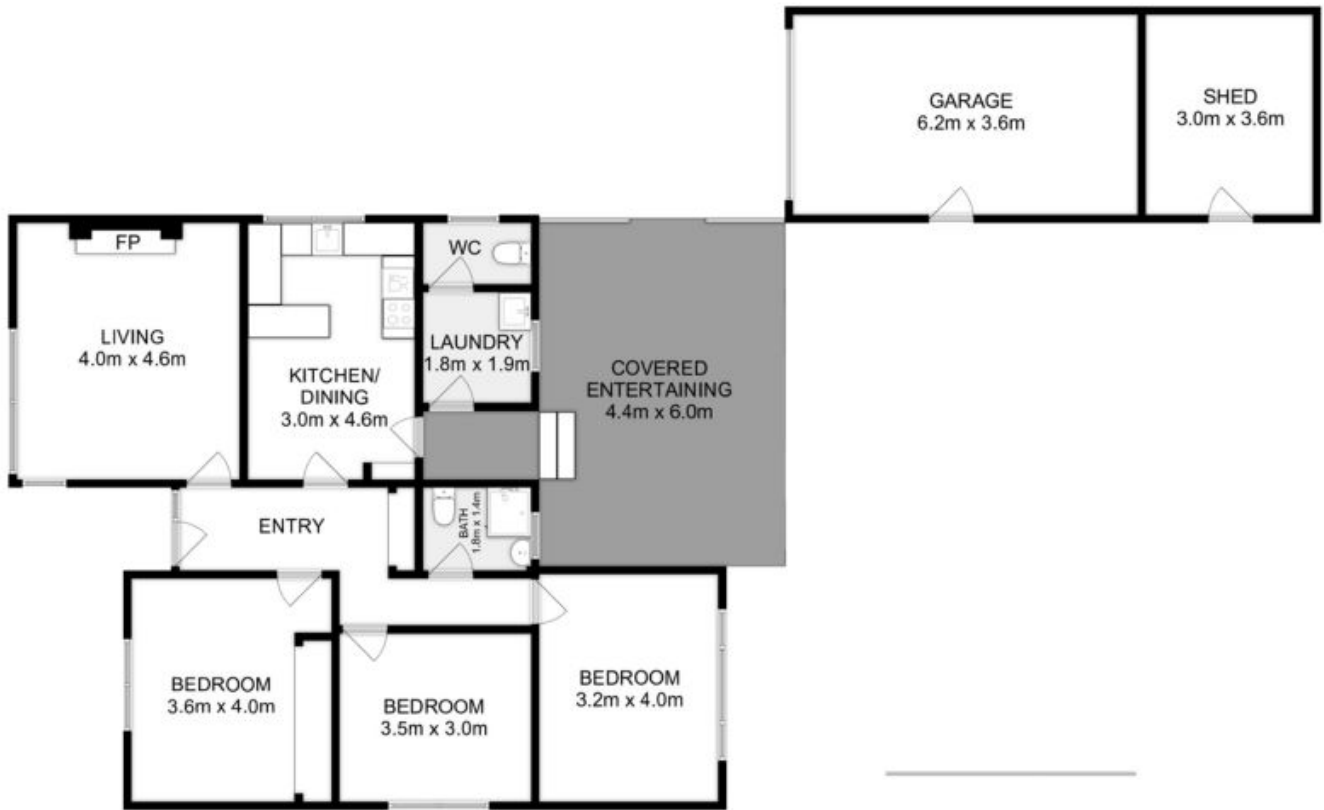
Council Rates: \$1,648.00/year (approx)

Water Rates: \$1,000.00/year (approx)

Warwick Page

Director & Real Estate Agent

0474122717



All measurements are internal and approximate.
 This plan is a sketch for illustration, not valuation.
 Produced by Open²view.com for Ripple.

Approx. floor area : 100 sqm
 Approx. shed area : 33 sqm

