

10 Ransley Court WEST MOONAH, TAS



4



3



4

Spacious and sunny family home with flexible living

Situated on a quiet cul de sac of house-proud neighbours and close to all the amenities of Hobart's northern suburbs, this magnificent four-bedroom, three-bathroom family home offers exquisite views and flexible living arrangements - ideal for those with quality, and comfortable modern living in mind.

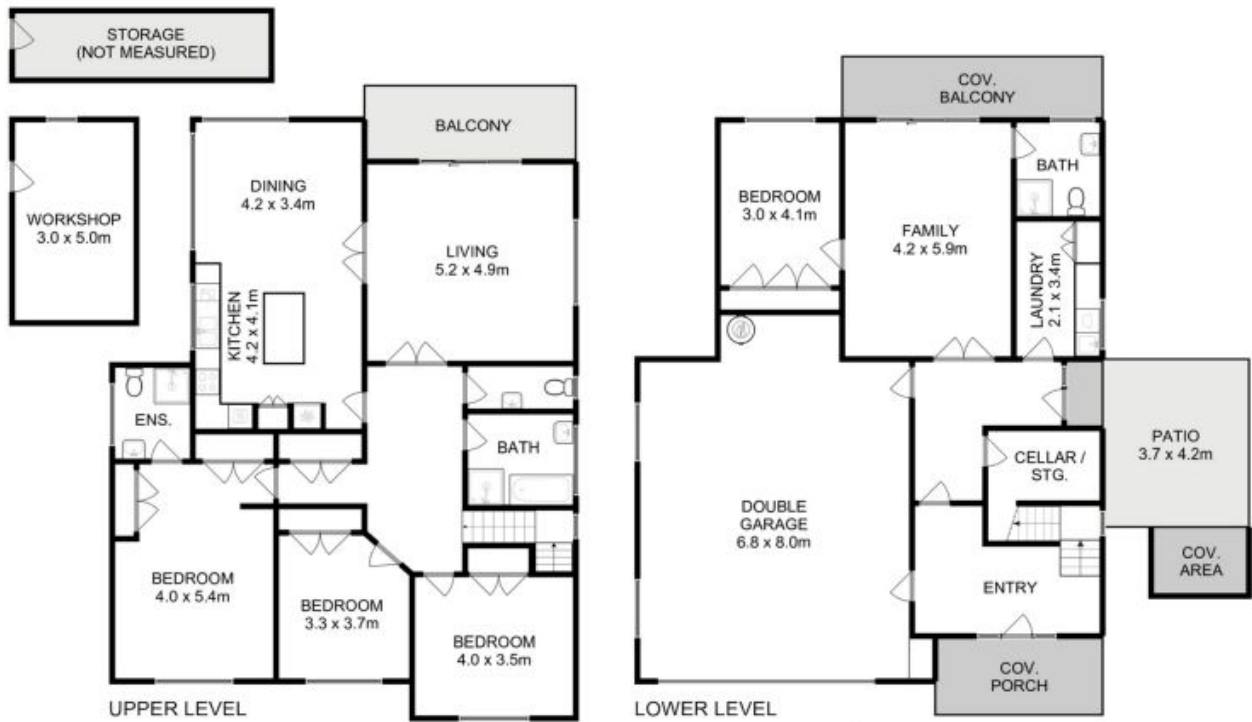
With reverse cycle air conditioning for all-round comfort, the lounge is a perfect family space to unwind, and the stylish kitchen features oodles of storage and quality timber cabinetry, plus ample dining space in the open plan layout.

Downstairs is a huge double garage with lots of storage space and internal access to the f

Warwick Page

Director & Real Estate Agent

0474122717



All measurements are internal and approximate.
 This plan is a sketch for illustration, not valuation.
 Produced by Open2view.com for Ripple.

Approx. floor area (inc. garage) : 300 sqm
 Approx. workshop area : 15 sqm

