



6 Tianari Drive HONEYWOOD, TAS



4



2



6

Expansive Honeywood home

Discover the perfect blend of convenience and tranquil country living in this private corner of peaceful Honeywood. Nestled on approximately 3 acres of rolling fields with idyllic rural views, this expansive four-bedroom property offers an abundance of space - both indoors and out - all within easy reach of Hobart's CBD.

The rambling approach up the long tree-lined drive, double front doors, and magnificent foyer all create a grand entrance. Plus, the home's solid brick, tile, and slab construction ensures durability and long-lasting appeal.

Inside, you'll find three spacious living areas, including a superb living and dining room with a lovely leafy outlook as the heart of the home. There's a cosy wood fire and reverse cycle air conditioning for year-round comfort and relaxed family living. A highlight for its generous proportions, the kitchen features timber cabinetry, ample storage and an isl

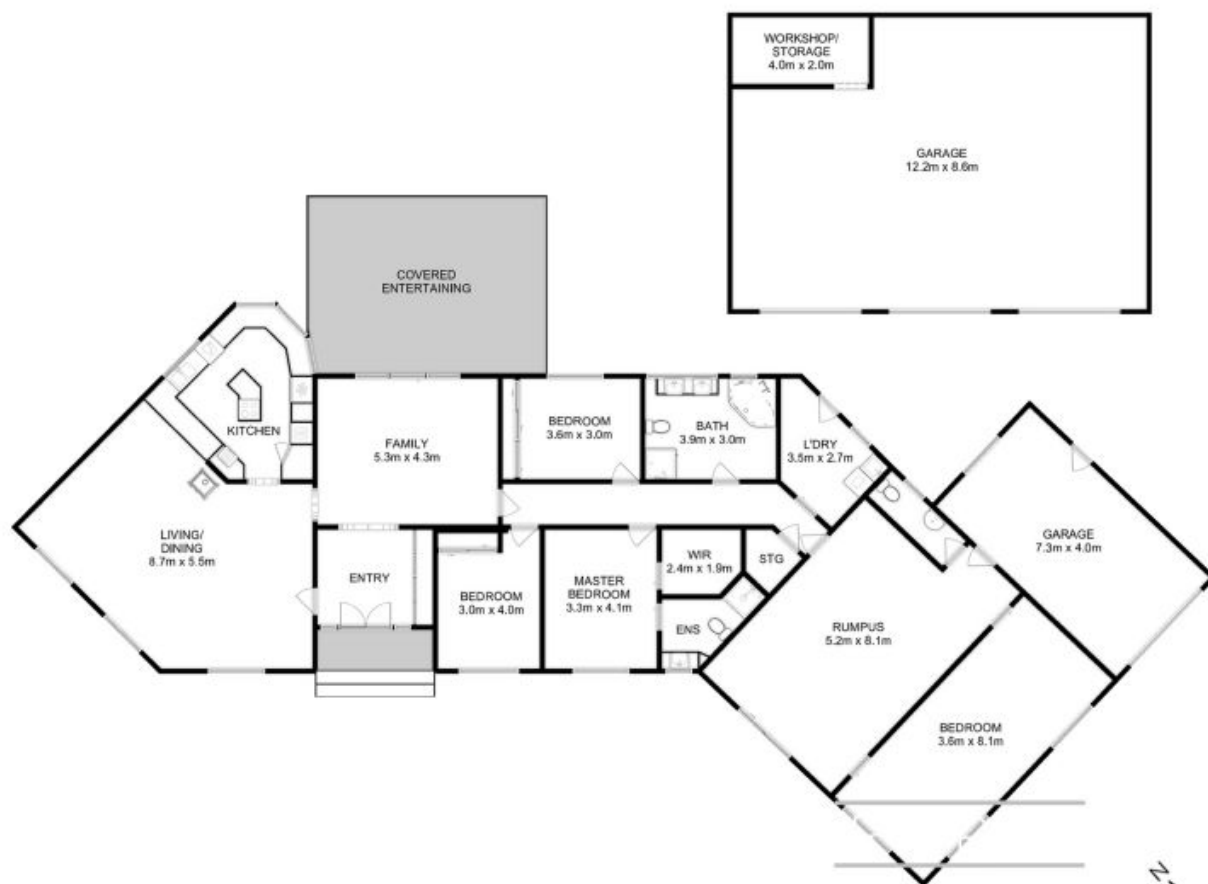
Council Rates: \$920.00/year (approx)

Water Rates: \$500.00/year (approx)

Warwick Page

Director & Real Estate Agent

0474122717



All measurements are internal and approximate.
This plan is a sketch for illustration, not valuation.
Produced by Open2view.com for Ripple.

Approx. floor area (inc garage) : 300 sqm
Approx. outbuilding area : 105 sqm

