

4/14 Bowden Street GLENORCHY, TAS



2



1



1

A complete package

Ideally located in an elevated and sunny position on a quiet no-through road, this thoughtfully designed two-bedroom split level unit will accommodate all your needs, from practical modern living to low maintenance outdoor spaces, all a leisurely stroll from central Glenorchy.

The home's upper level is dedicated to communal living, with a light and spacious lounge that opens onto a timber deck via glass sliding doors, offering a lovely spot to enjoy the sweeping vista over the Derwent River and the Eastern Shore hills beyond.

Walk to Glenorchy's retail precinct in less than five minutes, where all amenities are readily available. A 15-minute drive will get you to Hobart's CBD, but there's plenty of publ

Council Rates: \$1,500.00/year (approx)

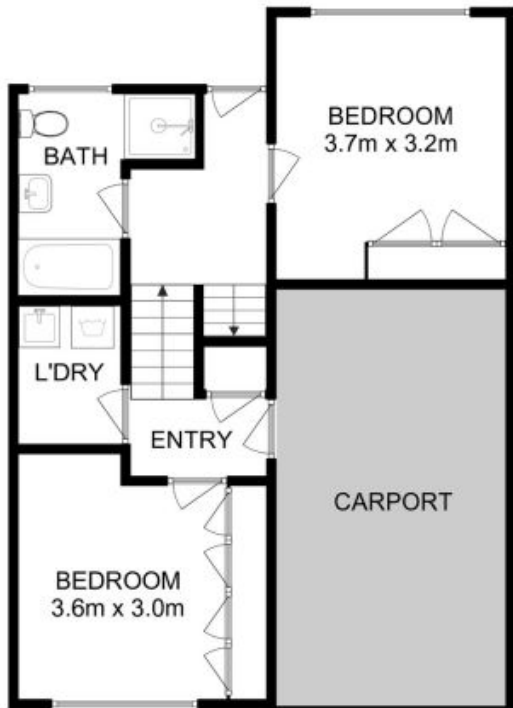
Water Rates: \$1,000.00/year (approx)

Strata Rates: \$560.00/year (approx)

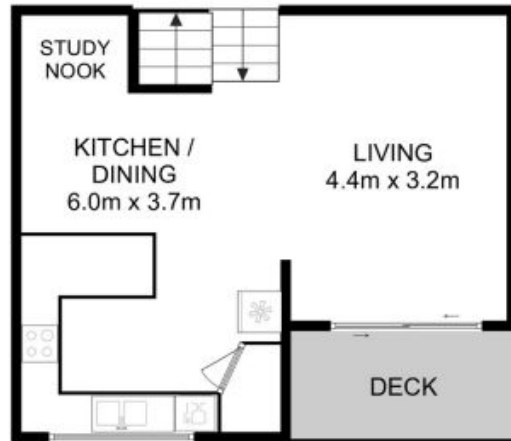
Warwick Page

Director & Real Estate Agent

0474122717



LOWER FLOOR



UPPER FL.CCR

All measurements are internal and approximate.
 This plan is a sketch for illustration, not valuation.
 Produced by Open2view.com for Ripple.

Approx. floor area : 92 sqm

