



26 Honeywood Drive SANDFORD, TAS



3



2



4

Waterfront Pipeclay Lagoon Property

Fall in love with this waterfront paradise from the moment you set foot in the spacious and comfortable three-bedroom home and experience the captivating views overlooking Pipe Clay Lagoon and the sparkling sea. This private and peaceful haven offers the ultimate in relaxed beachside living, with local amenities and central Hobart all within easy reach.

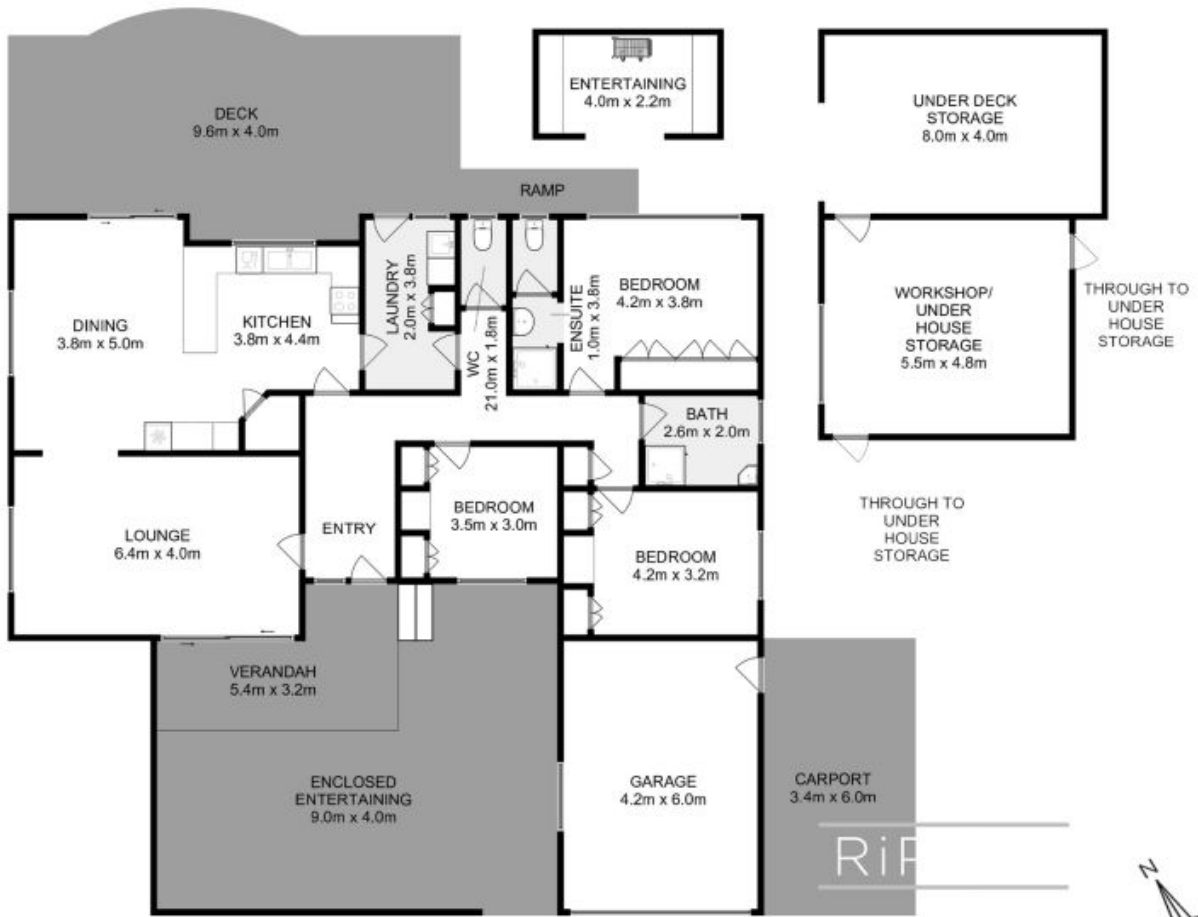
There is a family bathroom and separate WC, and all three bedrooms have large built-in wardrobes. The master bedroom includes an ensuite, and a gorgeous leafy outlook to wake up to every morning.

At over 1200sqm, this generous parcel of land is amply sized to accommodate the dual entertaining spaces, bricked BBQ area and large rear yard with fruit trees and space for a veggie garden (or ditch the hard work and head for the beach - the low maintenance yard is fan

Warwick Page

Director & Real Estate Agent

0474122717



All measurements are internal and approximate.
 This plan is a sketch for illustration, not valuation.
 Produced by Open2view.com for Ripple.

Approx. floor area : 150 sqm
 Approx. outbuilding area : 80 sqm (Inc Garage)

