



10 Manning Drive ORFORD, TAS



2



1



4

## Tranquil retreat with plenty of potential

If you're dreaming of a weekend escape from the bustle of city living that's still easily accessible from home, look no further than this charming two-bedroom retreat in the quiet seaside township of Orford.

Built in 1973 and offered for sale for the first time in 40 years, here is a rare opportunity - whether you fall in love with this quaint cottage and its relaxed retro ambience or have bigger plans for development - this exceptional property has so much potential.

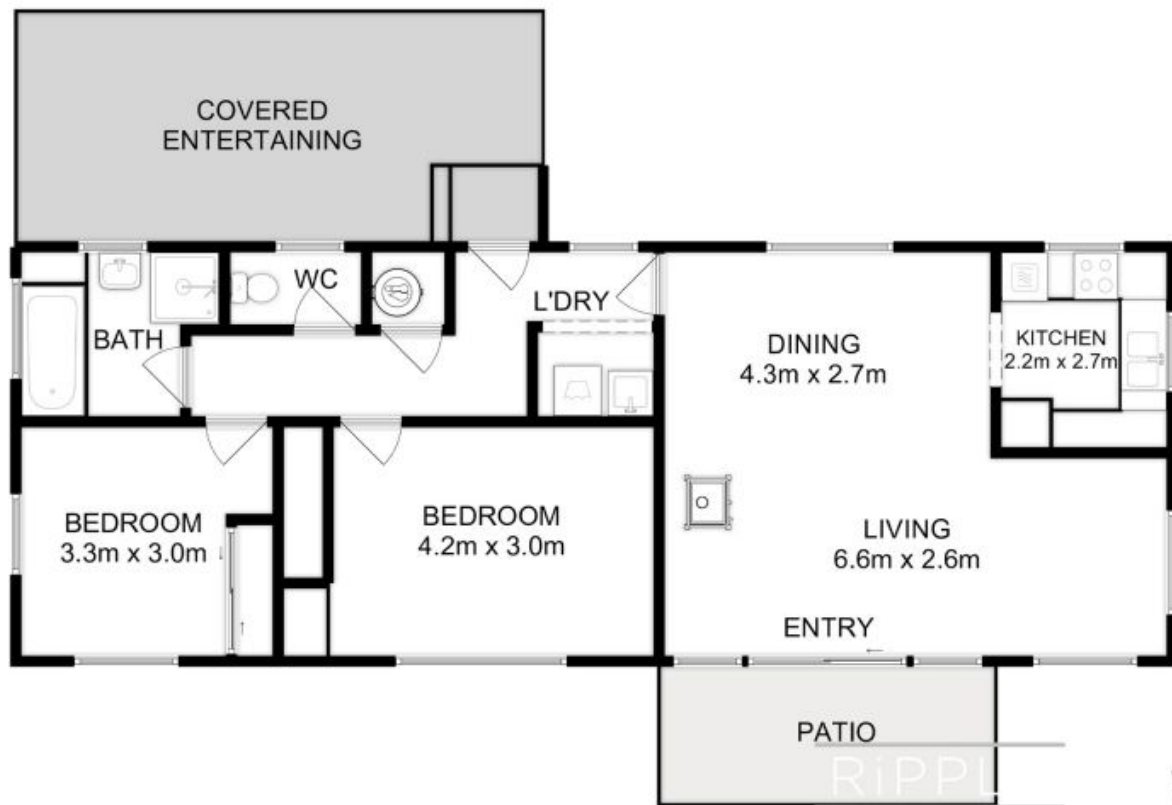
**Council Rates:** \$1,750.00/year (approx)

Situated just one hour from Hobart, 35 minutes from the rural hub of Sorell, and en route from Hobart airport, this is an easy getaway from almost anywhere. You will be only five m

## Warwick Page

Director & Real Estate Agent

0474122717



All measurements are internal and approximate.  
 This plan is a sketch for illustration, not valuation.  
 Produced by Open2view.com for Ripple.

Approx. floor area : 85 sqm

