



8 Lynton Avenue SOUTH HOBART, TAS



Stunning Californian Bungalow with Sweeping River Views

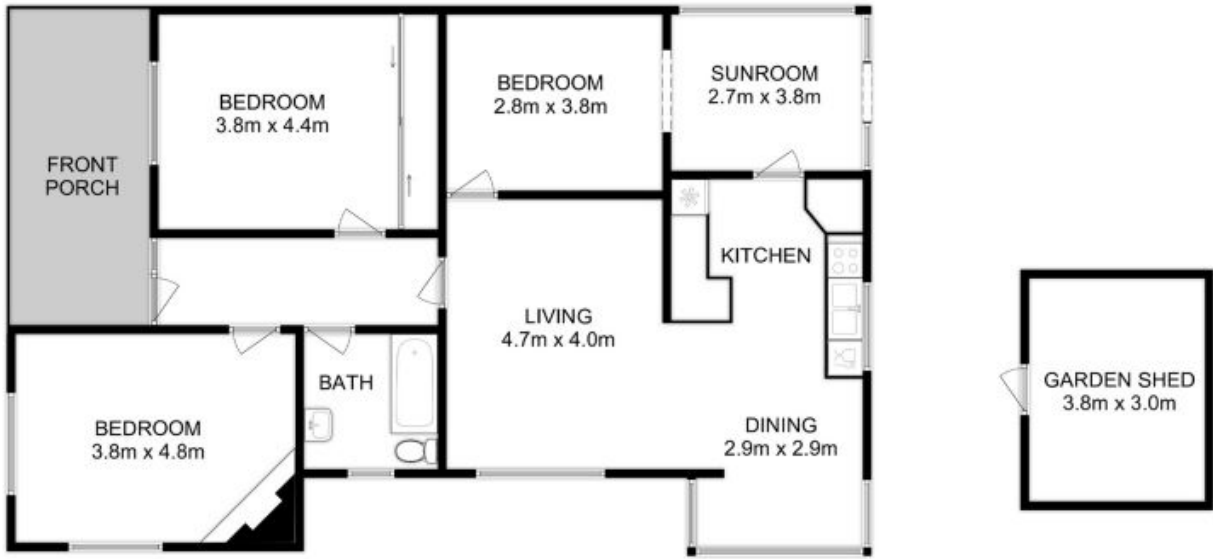
Ideally located on Lynton Avenue with stunning views over the Derwent River, this 3 Bedroom 1930s bungalow offers character and space. The expansive block of 700m² offers parking for up to four cars, beautiful gardens and for the savvy purchaser the opportunity to build an additional dwelling (STCA).

Council Rates: \$2,550.00/year (approx)

Warwick Page

Director & Real Estate Agent

0474122717



All measurements are internal and approximate.
This plan is a sketch for illustration, not valuation.
Produced by Open2view.com for Ripple.

Approx. floor area : 115 sqm
Approx. outbuilding area : 11 sqm

