



36/38 Amiens Avenue MOONAH, TAS

 2
  2
  1

Effortless apartment living

If you're contemplating more streamlined living arrangements, this wonderful two-bedroom apartment in a well-established area and close to all of Moonah's amenities is a perfect choice.

Built in 1996 and part of the quiet Whispering Pines complex, this second-floor home offers spacious and easy living - just move in and make yourself at home.

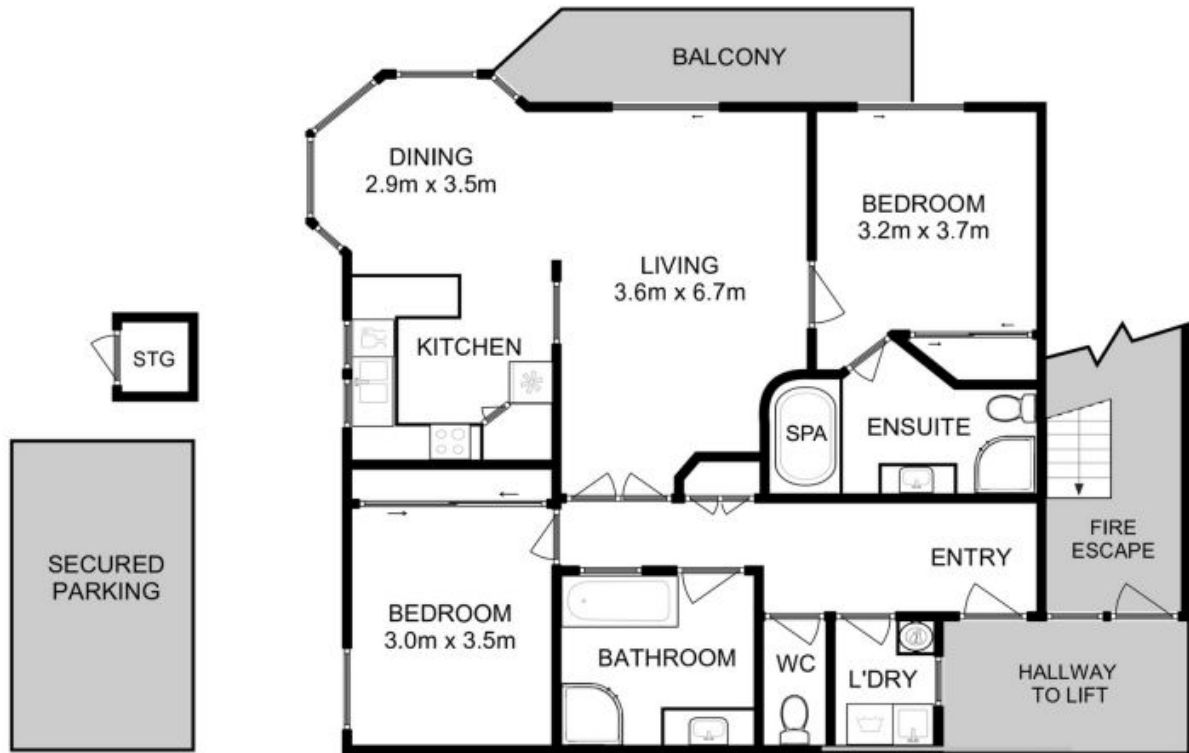
Step onto your own private balcony via glass sliding doors, facing north-easterly to capture the sunny aspect and delightful view, where you can unwind with a coffee, wine or a good book.

Both bedrooms are generously sized with ample built-in storage, and the master bedroom includes balcony access and an impressive ensuite with spa, corner shower, vanity and toilet.

Council Rates: \$1,740.00/year (approx)

Mel Shutt

Director and Property
Consultant
0428428884



All measurements are internal and approximate.
 This plan is a sketch for illustration, not valuation.
 Produced by Open²view.com for Ripple.

Approx. floor area : 100 sqm

