



38A Stratton Avenue LENA VALLEY, TAS

2 1 3

Ideal Lenah Valley living with convenience and charm

With magnificent city and mountain views, this two-bedroom freestanding home situated in a leafy corner of popular Lenah Valley is a wonderful opportunity for investors, downsizers and those looking for a quiet and comfortable lifestyle - all within ten minutes of central Hobart.

Step through to the pleasant dining room, and on to the sizeable kitchen. Recently renovated since the property's 1975 build, there's a good amount of storage here, and the direct view of majestic kunanyi/Mt Wellington will make every meal prep a pleasure.

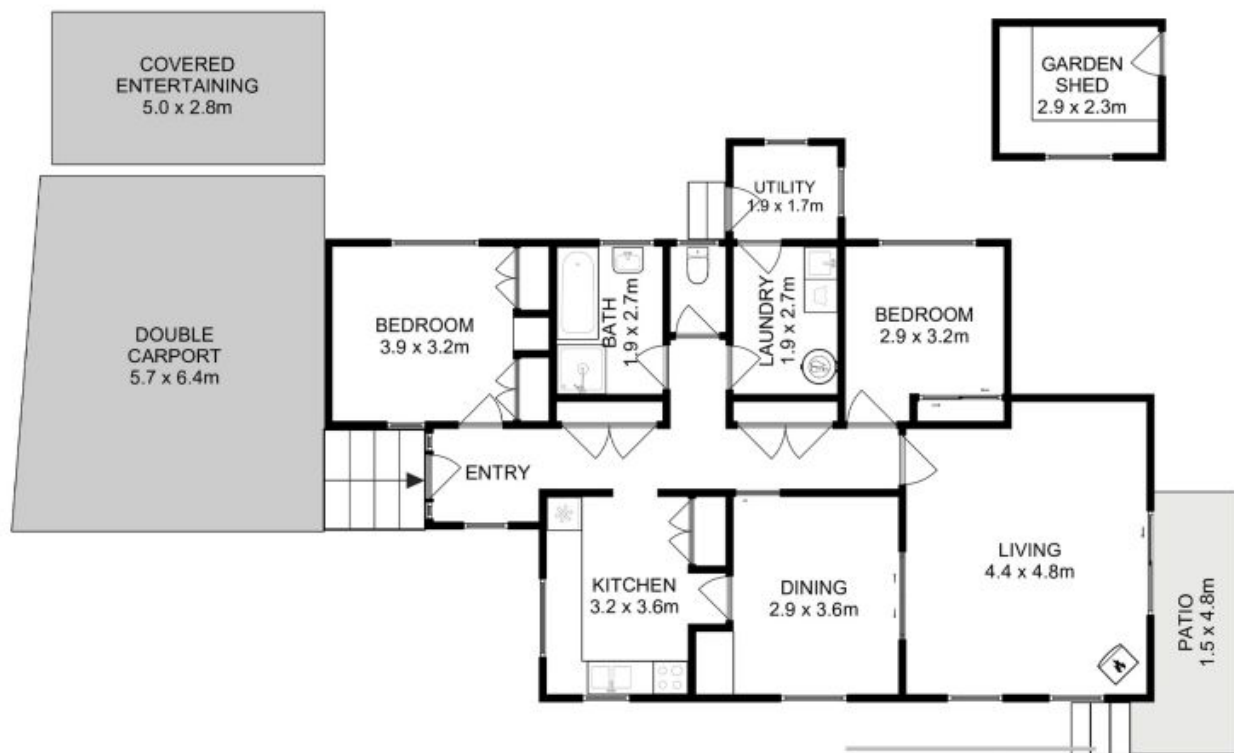
Both of the generous double bedrooms have built-in wardrobes and face onto the private rear yard. The bathroom has also been updated in recent times and includes a large vanity, separate bath and shower, with the toilet adjacent and internal laundry facilities available

Council Rates: \$1,877.00/year (approx)

Warwick Page

Director & Real Estate Agent

0474122717



All measurements are internal and approximate.
 This plan is a sketch for illustration, not valuation.
 Produced by Open2view.com for Ripple.

Approx. floor area : 110 sqm
 Approx. outbuilding area : 6.7 sqm

