



12 Ballawinnie Road LINDISFARNE, TAS



Contemporary living with 1920's charm in prime Lindisfarne location

A sunny and central location in ever-popular Lindisfarne is the ideal setting for this magnificent vintage home, sure to impress with its quality construction, period features, shady wrap-around deck, and undeniable street appeal.

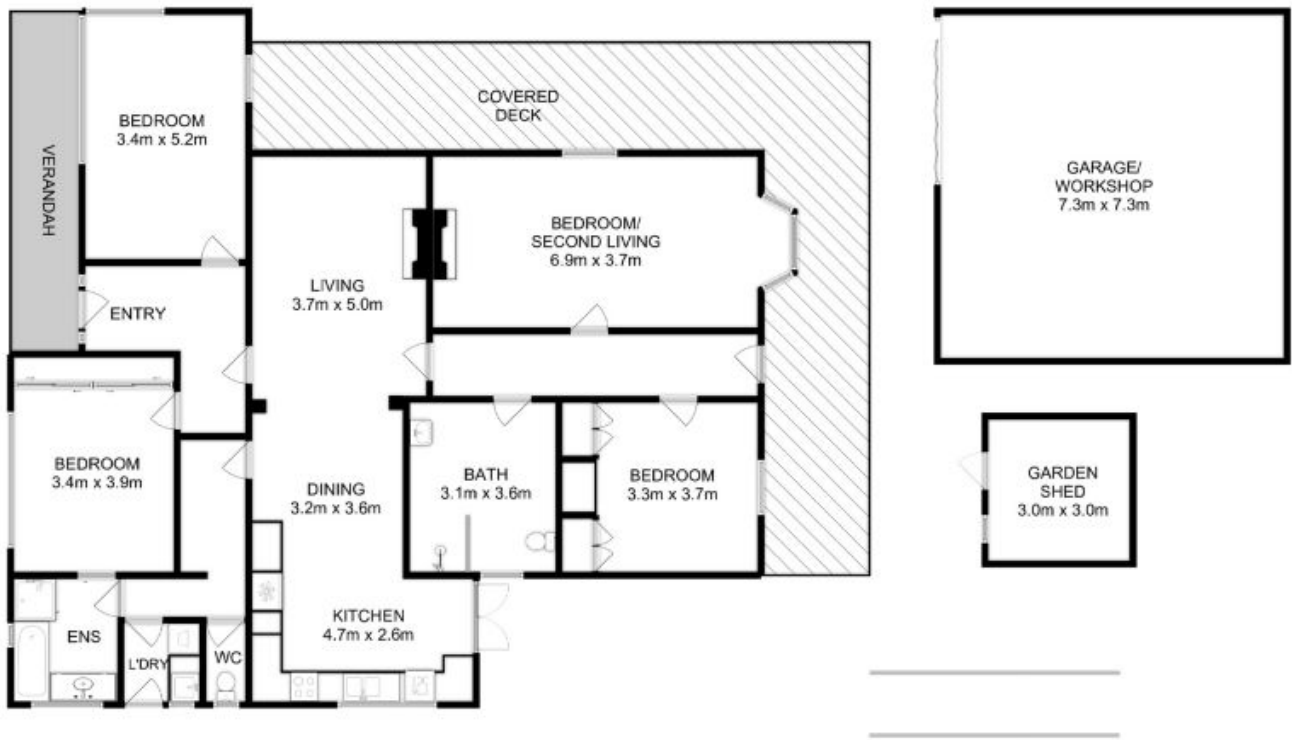
Built in 1920, this charming and chic home has maintained hints of its rich history but has been updated where it counts to provide modern comforts and easy family living.

There are four sizeable bedrooms, and the master includes generous built-in storage and an ensuite. If you prefer an additional living space, the large rear bedroom with bay window overlooking the rear yard can easily be converted. An impressive walk-in shower, toilet a

Warwick Page

Director & Real Estate Agent

0474122717



All measurements are internal and approximate.
 This plan is a sketch for illustration, not valuation.
 Produced by Open2view.com for Ripple.

Approx. floor area : 180 sqm
 Approx. outbuilding area : 62 sqm

