



4 Asquith Court CLAREMONT, TAS



3



1



2

Sunny gardens and stunning views

Set amongst magnificent gardens and with views over the Derwent River, across to the Eastern Shore and the Bowen Bridge - this wonderful three-bedroom home located on a quiet cul de sac has so much to offer and will appeal to a range of purchasers.

A comfortable living room with a wood fire and reverse cycle air conditioner provides a relaxed space for the family to unwind whatever the weather outside, and the large eat-in kitchen is light and bright and features ample storage.

All three bedrooms are a good size, serviced by the main bathroom which has a vanity, shower over bath, and a toilet located separately.

The beautifully maintained and established gardens are an absolute treat - with an abundant

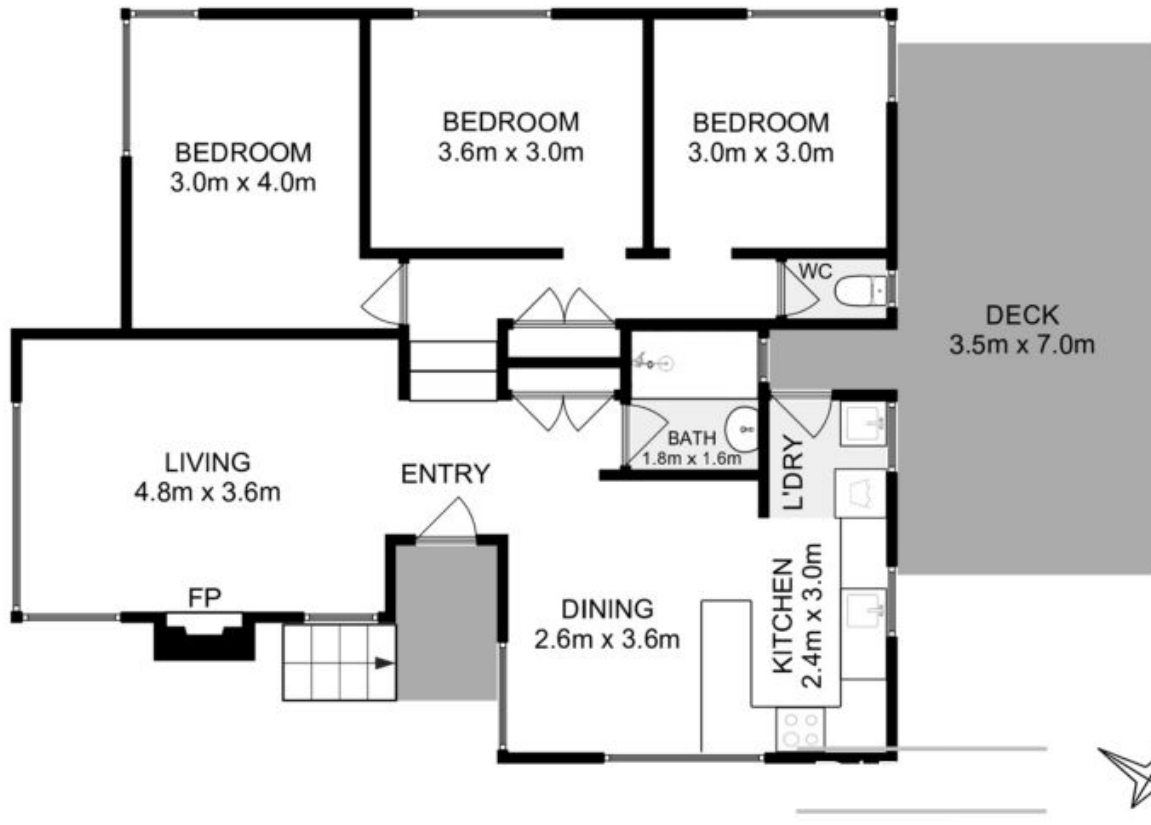
Council Rates: \$1,800.00/year (approx)

Water Rates: \$1,100.00/year (approx)

Warwick Page

Director & Real Estate Agent

0474122717



All measurements are internal and approximate.
This plan is a sketch for illustration, not valuation.
Produced by Open²view.com for Ripple.

Approx. Floor area : 95 sqm