



210 Back River Road NEW NORFOLK, TAS



3



1



3

Delightful house and garden

With magnificent gardens to enjoy, immaculate presentation and excellent storage inside and out, plus a convenient location close to New Norfolk's many amenities - this delightful four-bedroom family home is a real catch.

Retaining the style and charm from its 1965 construction, some simple updates will transform the solid and spacious foundation into the modern home you have been searching for.

Families will love the convenience of having Fairview Primary School directly across the road, a 35-minute drive will take you to Hobart's CBD, and central New Norfolk is around 1.5km away - the bustling regional centre providing easy access to the many services, stores

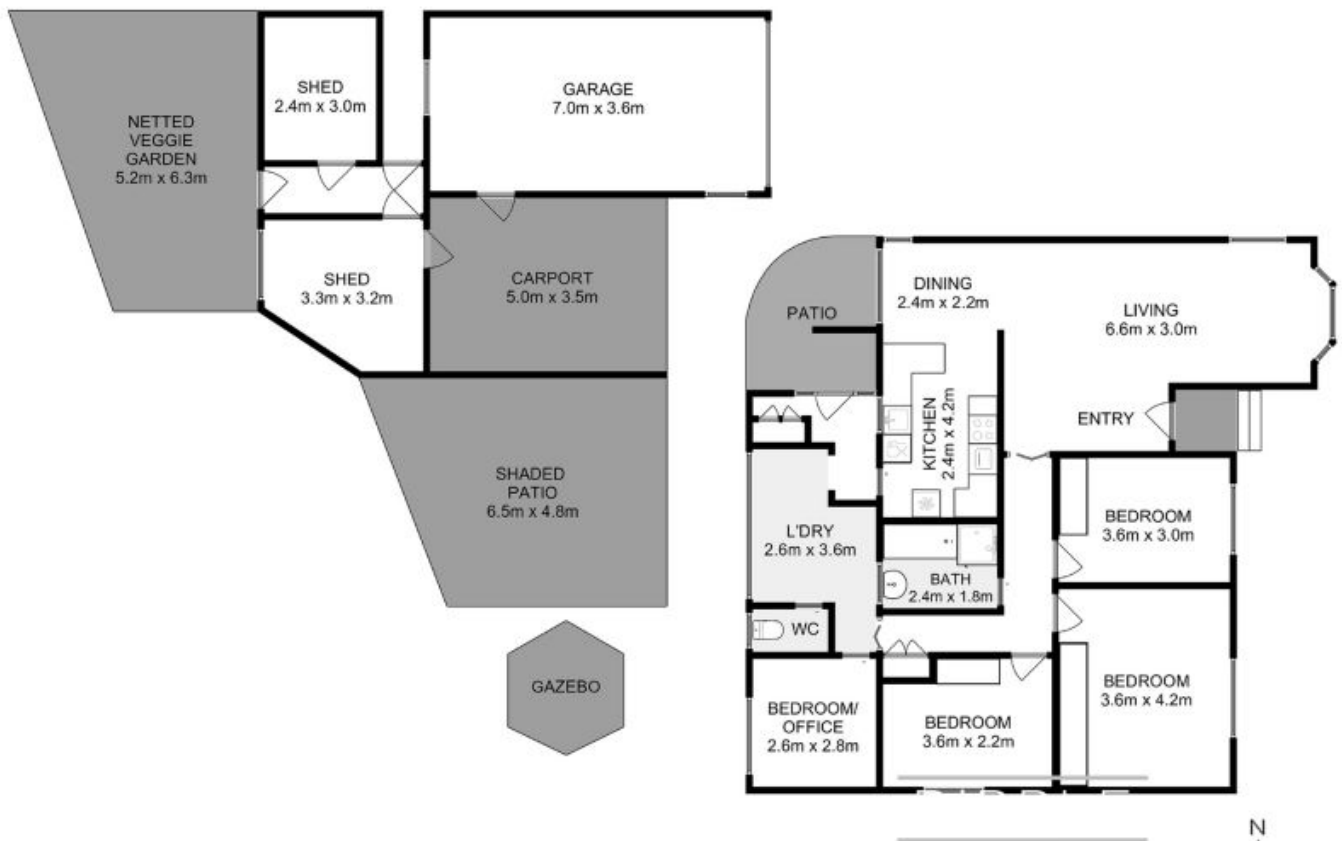
Council Rates: \$1,200.00/year (approx)

Water Rates: \$1,000.00/year (approx)

Warwick Page

Director & Real Estate Agent

0474122717



All measurements are internal and approximate.
This plan is a sketch for illustration, not valuation.
Produced by Open²view.com for Ripple.

Approx. Floor area : 117 sqm
Approx Outbuilding area : 54 sqm

