



80 Currajong Street MORNINGTON, TAS



Sunny and Scenic Home. 10 Minutes from the City

With fabulous views over the Meehan Range, natural wood features throughout, and a sunny northerly aspect, this beautifully presented and conveniently located three-bedroom home effectively utilises its modest floorplan for maximum flexibility and comfort.

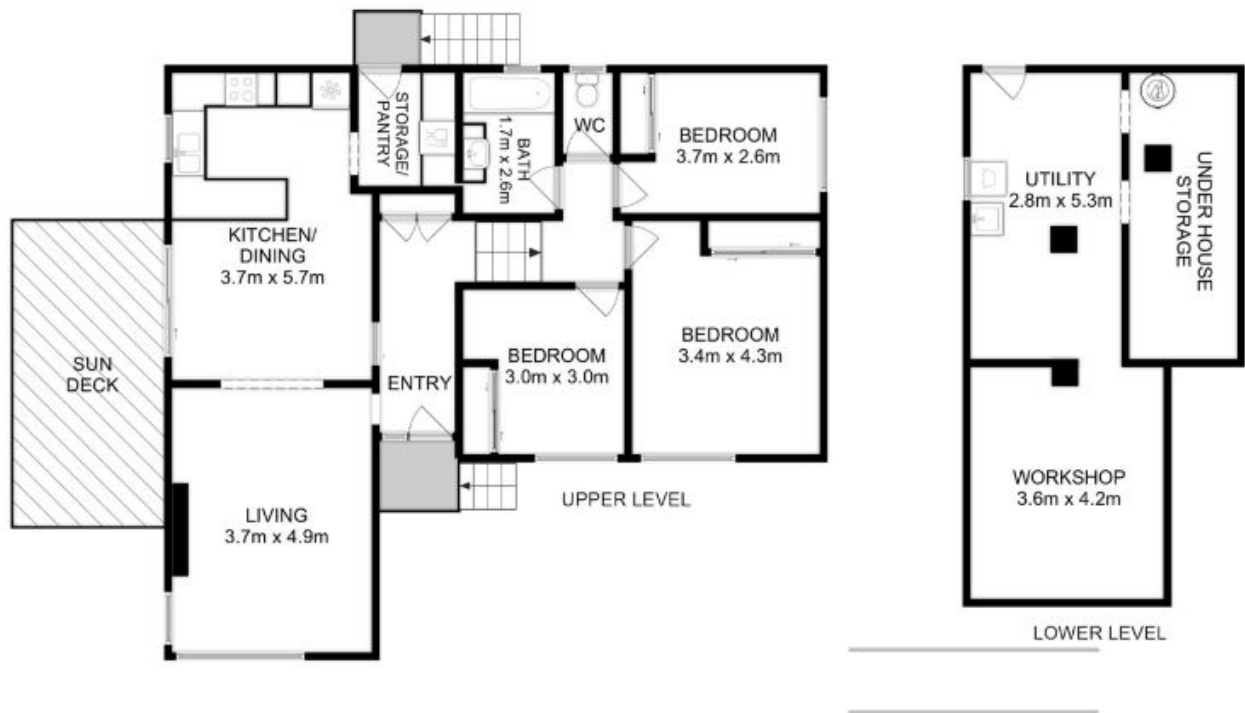
From the dining, you can access the wide timber deck via sliding doors. Bask in the sun, enjoy summertime entertaining or relaxed outdoor dining - all with a stunning leafy outlook and the best seat in the house at sunrise and sunset.

The split-level design separates the sleeping quarters from the main living area, providing privacy and drawing the heat from downstairs up to the three double bedrooms - meaning energy efficiency and savings on power bills. All the bedrooms have built-in wardrobes, and

Warwick Page

Director & Real Estate Agent

0474122717



All measurements are internal and approximate.
 This plan is a sketch for illustration, not valuation.
 Produced by Open2view.com for Ripple.

Approx. floor area : 105 sqm
 Approx. lower level area : 42 sqm

