

1/69 Sinclair Avenue MOONAH, TAS



3



1



1

## Spectacular views

With a magnificent outlook across Hobart's cityscape and an ideal position at the end of a quiet cul de sac, this three-bedroom townhouse offers low maintenance and convenient living - nestled between three of Hobart's most popular northern suburbs and just a short drive to Hobart's CBD.

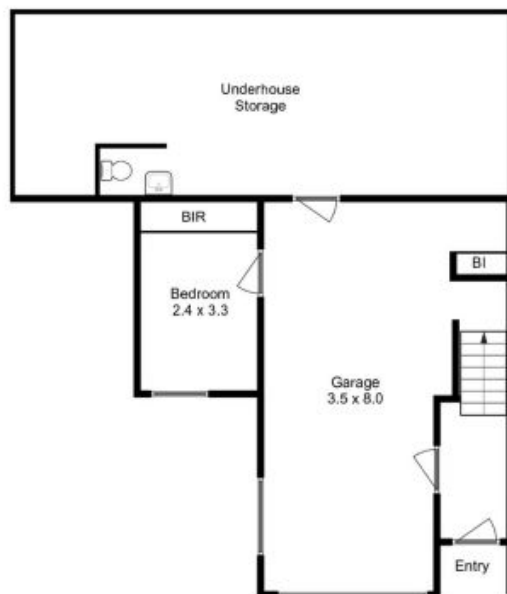
Built circa 1995 and only one of two properties on the block, the immaculately kept double brick and tile home has been recently repainted inside and is ready for you to move straight in.

Compact and easy-care, the secure rear yard is a great area for kids or small pets play, or for gardeners keen to reduce the volume of work that larger spaces require. Continue nur

**Council Rates:** \$2,102.00/year (approx)

## Mel Shutt

Director and Property  
Consultant  
0428428884



All measurements are internal and approximate.  
This plan is a sketch for illustration, not valuation.  
Produced by Open2view.com for Ripple.

Approx. floor area : 137 sqm  
(including garage)

