



2/18 Amber Street CLAREMONT, TAS



Spacious, sunny unit with water views

Discover this low maintenance two-bedroom unit that offers fabulous water views and a quiet, convenient location - just a short stroll to Claremont's shops and foreshore, and a 20-minute commute to central Hobart.

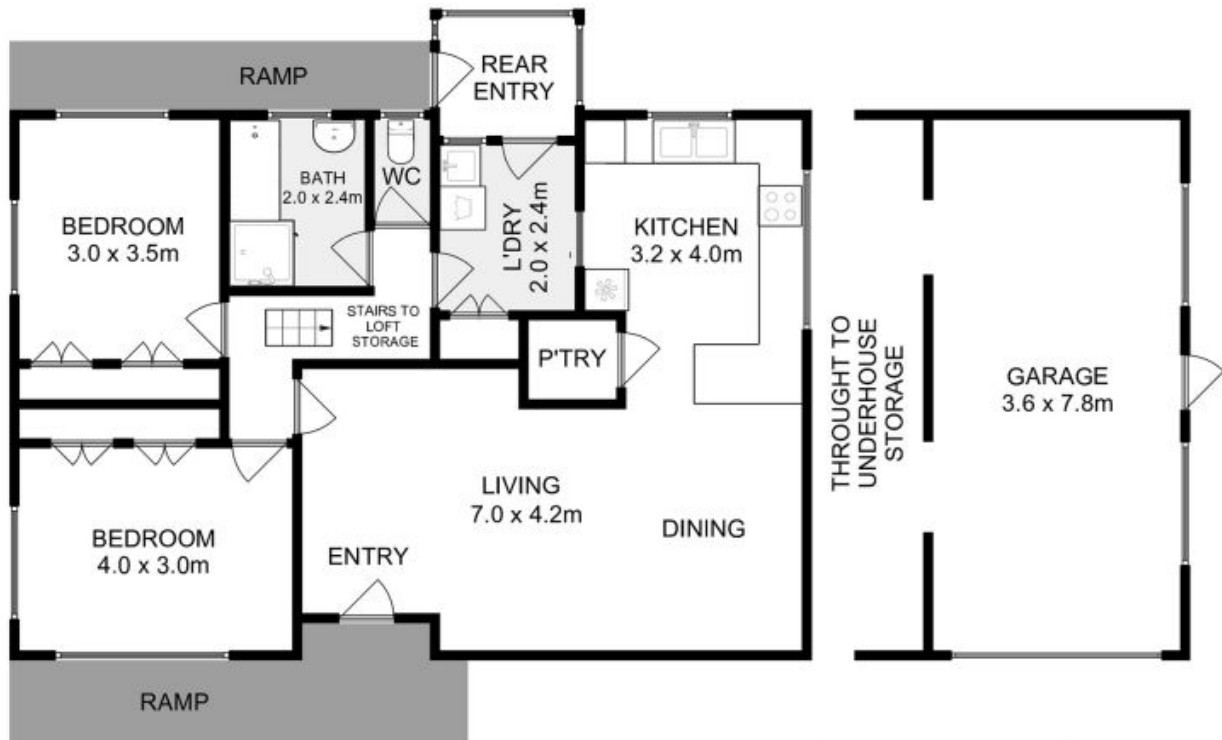
Built in 1998 and beautifully maintained since, this inviting abode requires nothing but for you to move in and unpack. It is designed with accessibility in mind - with full ramp entry making it ideal for downsizers and retirees. The unit also features an alarm system and handy attic storage.

Located only 450m from Claremont Plaza's shops, and all services at Glenorchy's Northgate

Warwick Page

Director & Real Estate Agent

0474122717



All measurements are internal and approximate.
 This plan is a sketch for illustration, not valuation.
 Produced by Open²view.com for Ripple.

Approx. Floor area : 95 sqm
 Approx Garage area : 32 sqm

