



65 Wentworth Street BELLERIVE, TAS



Convenient lifestyle, prime location

Offering a fabulous lifestyle for families, or those who appreciate relaxed and convenient living close to local amenities and attractions - this exceptional three-bedroom brick and tile home is a perfect first home or investment opportunity.

A renovated bathroom, reverse cycle air conditioning, and solar panels will make life more comfortable and energy efficient, and the communal spaces are ideal for easy everyday living.

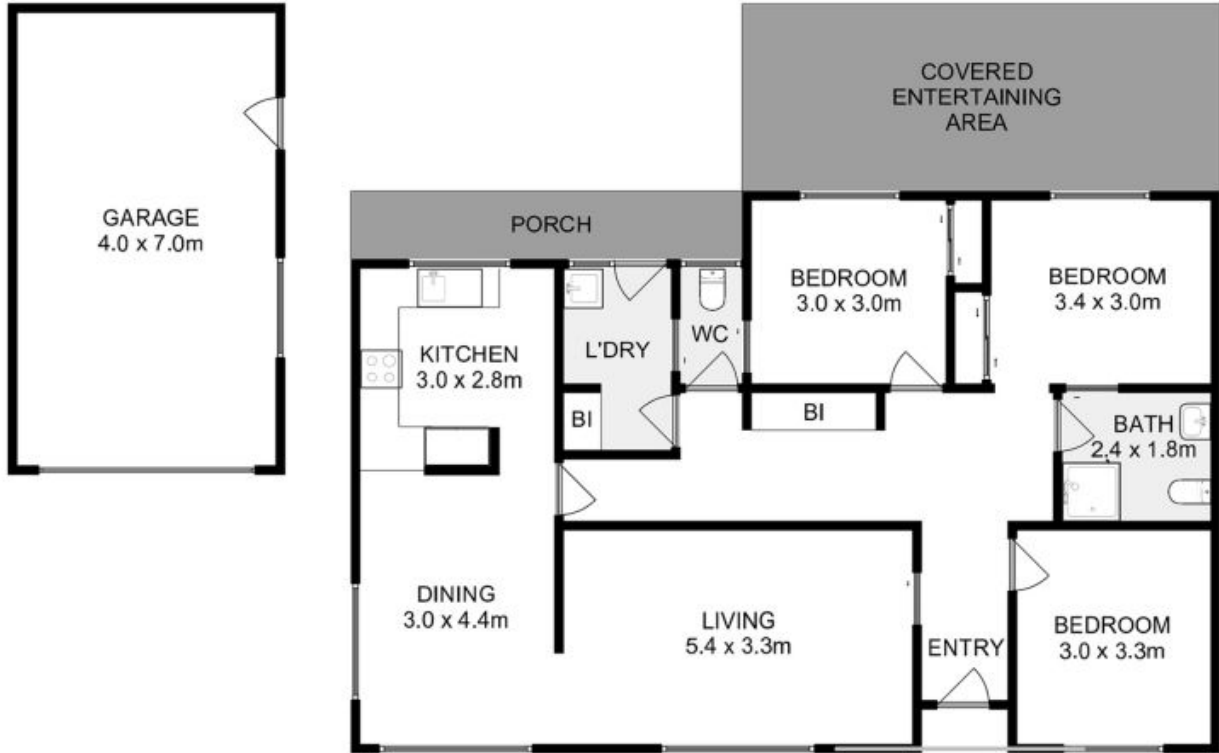
Two of the three double bedrooms feature built-in wardrobes, and all have a pleasant outlook.

The 561sqm block is level and low maintenance, with a fenced rear yard that provides a secure, sun-filled expanse for kids and pets to play. There is a solid lock-up garage, off-st

Warwick Page

Director & Real Estate Agent

0474122717



All measurements are internal and approximate.
 This plan is a sketch for illustration, not valuation.
 Produced by Open²view.com for Ripple.

Approx. Floor area : 110 sqm
 Approx Garage area : 28 sqm

